

## TECHNICAL DATASHEET

# C01/C01N SLATE DRY VERGE



The Kytun™ Slate Dry Verge System permanently secures slate applications on gable ends protecting the verge from wind uplift and rain.

The design helps protect the edge of the roof from the elements and eliminates the possibility of lifting and damage to the roof underlay. No mortar or timber guides are required. It can be bespoke manufactured to virtually any profile to suit individual requirements.

All our bespoke dry verge is manufactured from 0.7mm high grade Aluminium.



bre





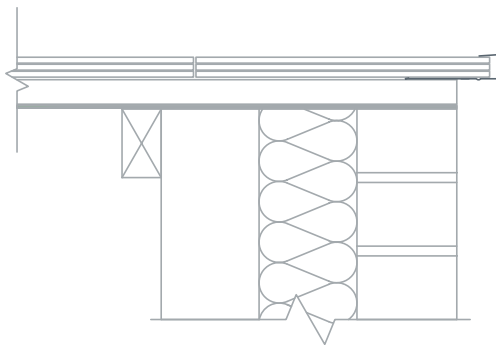
## TECHNICAL DATASHEET

# C01/C01N SLATE DRY VERGE

## Product Details

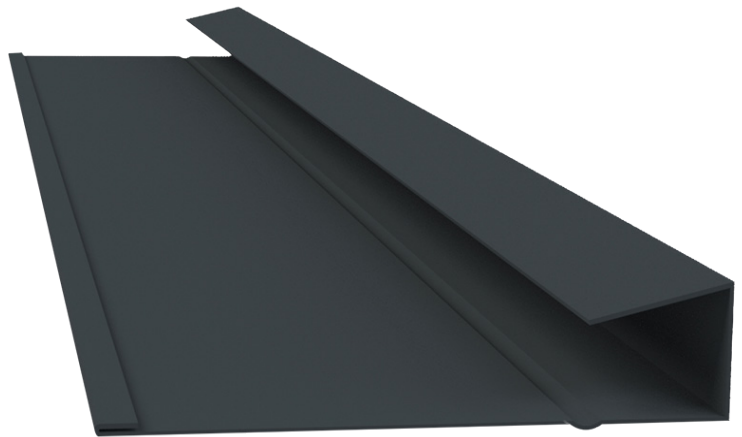
The Kytun™ Slate Dry Verge System permanently secures slate applications on gable ends protecting the verge from wind uplift and rain. The Slate Dry verge System can be used with both interlocking slates and double lap natural or fibre cement slates.

The components are manufactured from high grade pre-primed polyester coated aluminium.



## Product Features

- Provides full wind uplift and rain protection.
- Patented 'Drip System' which allows for self drainage of rain water into the gutter.
- Extremely easy and quick to install.
- Requires no maintenance once installed.
- Can be fully customised.
- Extensive range of colours available.



## Dimensions

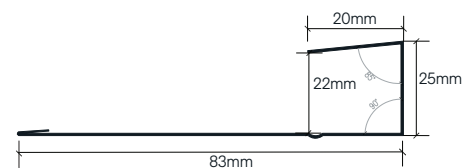
C01/1N Slate Dry Verge: Aluminium  
Overall length: 3000mm

Code	Size	Colour	Pk Qty
C01	18mm x 3m	Blk • Blue/Blk • Brwn	20
C01N	25mm x 3m	Blk • Blue/Blk • Brwn	20

Aluminium  
Polyester Coated



4-5mm  
Fibre Cement Slate



6-8mm  
Natural Slate

