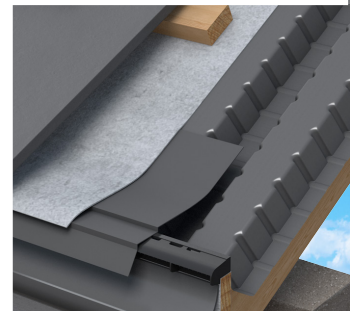
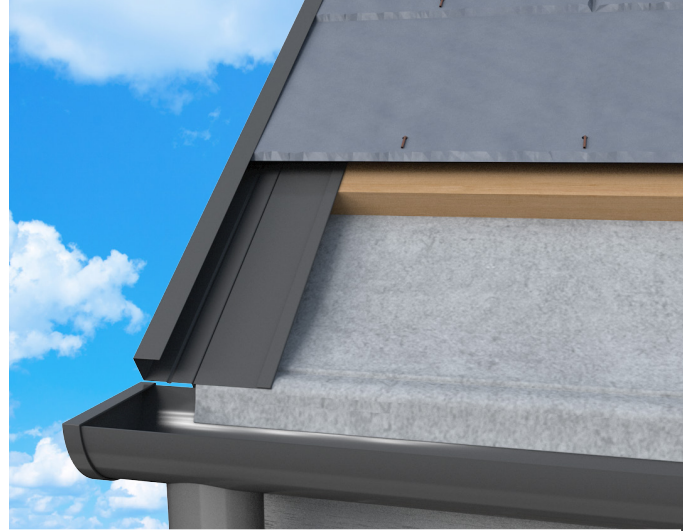


Kytun™
Product Brochure
Dry Fix Roofing & Ventilation Products





Who we are...

The NorthWest Aluminium is one of the largest manufacturers, wholesalers and distributors of Roofing and Ventilation products in Ireland & the UK. Established over 30 years ago, we pride ourselves on complete customer satisfaction, huge innovative product range and excellent service.

Kytun™ is a brand name of North West Aluminium that focuses on our range of innovative, high quality Dry Roofing products throughout Ireland & the UK.

We specialise in the manufacture of Dry Verge Systems, which we invented, designed, patented and introduced to the market all those years ago. Today we are the main producers of Dry Verge Systems, supplying our product range throughout Ireland and the UK under the Kytun™ brand.

With very close ties to some of the leading producers of Roofing and Ventilation products from all over the world we offer an extensive range of quality products, which we stock and distribute throughout Ireland and the UK.

We are mainly a wholesale company that exclusively supplies our product range through the leading Builders and Roofers Merchants.

For more information on our stockists please contact us.

Contents

What is Dry Roofing	4	Dry Valley Systems	27
What is BS 8612	6	Slate Dry Valley Systems - Aluminium	28
Dry Verge Systems	8	Slate Dry Valley Systems - Galvanised Steel	28
Slate Dry Verge Systems - Aluminium	9	Tile Dry Valley Systems - Aluminium	30
Slate Dry Verge Systems - Galvanised Steel	12	GRP Dry Verge Systems	33
Slate Dry Verge Systems - uPVC	14	Dry Ridge Systems	35
Tile Dry Verge Systems - Aluminium	17	Soakers	41
Tile Dry Verge Systems - Galvanised Steel	20	Flashings	43
Tile Dry Verge Systems - uPVC	21	Eaves Ventilation	47
Dry Verge Systems Accessories	23		



What is Dry Fix Roofing?

Dry Fix Roofing is the method of mechanically fixing product to the roof perimeter without the use of traditional sand and cement mortar. Traditional mortar bedding of Ridge Tiles, Hips and Verges is quickly becoming a thing of the past, with Dry Fix solutions now becoming the norm for most applications.

The move towards Dry Fix products has been accelerated by the large number of claims in relation to mortar failing when used as a roof fixing method. Mortar has a limited lifespan and is susceptible to cracking, falling out and letting rain penetrate the roof space.

Problems with the use Mortar

- Cracks and shrinks over time.
- Does not stop rain water penetrating the roof
- Does not sufficiently protect ridge tiles and tiles at the verge against wind and storm damage

Advantages of Dry Fix Systems

For the Roofer

- Can be installed in all-weather types, including rain, something which can't be done when using mortar
- Dramatically speeds up the installation time – approximately 50% quicker than using mortar
- When installing a Dry Verge System, especially a continuous system, the verge trim gives the roofer a fixed guide to work to.

For the Home Owner

- Maintenance free, does not require repairing over time.
- Does not have to worry about mortar cracking & falling out over time.
- Ridge and Hip Tiles are more securely installed
- Verges are properly covered, will stop rain water penetrating the roof space and high winds blowing off Tiles or Slates from the roof.



bre







What is BS 8612?

BS 5534: the Code of Practice for Slating and Tiling, was first introduced as a British Standard back in the 1970s and has seen various updates over the years. A significant shift in culture occurred in the 2014 revision, which saw wide ranging changes to the way pitched roofs were fixed in the UK, effectively banning the use of wet fix only systems with a mechanical or dry fix component having to be included in almost all cases.

With no standards imposed on products the market was flooded with cheap, poorly designed products. In response to this, BS 8612: Dry-fixed ridge, hip and verge systems for slating and tiling; Specification; has been drafted and released. This standard introduces tests against which the standard Dry Fix Roofing products are to be tested.

It is the responsibility of Merchants, Architects and Roofing Contractors to make sure that when using a Dry Fix System that it meets the requirements of BS 8612 and that the manufacturer is able to demonstrate this through a testing report carried out by a recognised independent testing establishment.

Testing

The new standard contains 2 key types of testing;

Tests with a simple pass or fail criteria **and**

Tests that provide a performance value for the product which can be measured against customer requirements.

Within the testing there are 7 key elements that are tested to determine the performance of Dry Fix products against the requirements of BS 8612

- Tensile Strength of Ridge Roll *
- Peel Adhesion Test for Ridge Roll *
- Vertical Wind Uplift Resistance Test of Ridge Fastener
- Horizontal Wind Uplift Resistance Test of Verges
- Vertical Wind Uplift Resistance Test of Verges
- Rain drainage onto gable *
- Ridge Roll Elongation

Tests marked with an * require a clear-cut pass, others provide a performance-based result.

All of our Dry Fix Products have been independently tested by BRE (British Research Establishment) to the tests outlined above and have far exceeded the accepted performances.

Full report is available on our website: www.northwestaluminium.com

Problems with using traditional mortar





SLATE DRY VERGE SYSTEMS





Slate Dry Verge (T1)

Slate Dry Verge (T1) - Aluminium

Code	Size	Material	Pk Qty.
C01	18mm	Aluminium	20
C01N	25mm	Aluminium	20

Available Colours: Black  Blue/Black  Brown 

Available Lengths: 3000mm

Compatibility

18mm Version:

Suitable for a maximum individual slate thickness of 4-5mm.

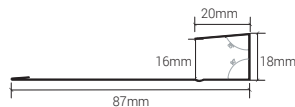
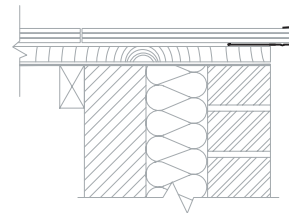
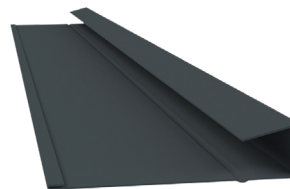
25mm Version:

Suitable for a maximum individual slate thickness of 6-8mm.

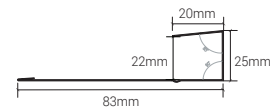
All trims are over batten fixed.



bre



4-5mm Fibre Cement Slate



6-8mm Natural Slate



Slate Dry Verge (T2)

Slate Dry Verge (T2) - Aluminium

Code	Size	Material	Pk Qty.
C02	18mm	Aluminium	8
C02N	25mm	Aluminium	8

Available Colours: Black  Blue/Black  Brown 

Available Lengths: 3000mm

Compatibility

18mm Version:

Suitable for a maximum individual slate thickness of 4-5mm.

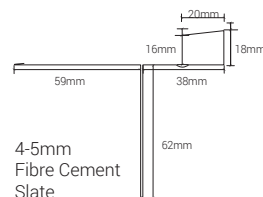
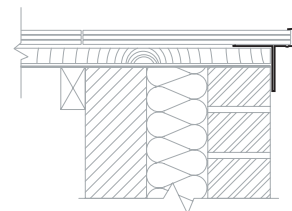
25mm Version:

Suitable for a maximum individual slate thickness of 6-8mm.

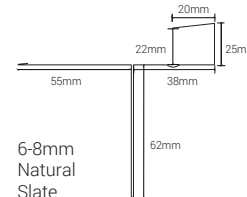
All trims are over batten fixed.



bre



4-5mm
Fibre Cement
Slate



6-8mm
Natural
Slate



Retro-Fit Slate Dry Verge

Retro-Fit Slate Dry Verge - Aluminium

Code	Size	Material	Pk Qty.
C03	18mm	Aluminium	10
C03N	Universal	Aluminium	10

Available Colours: Black  Blue/Black  Brown 

Available Lengths: 3000mm

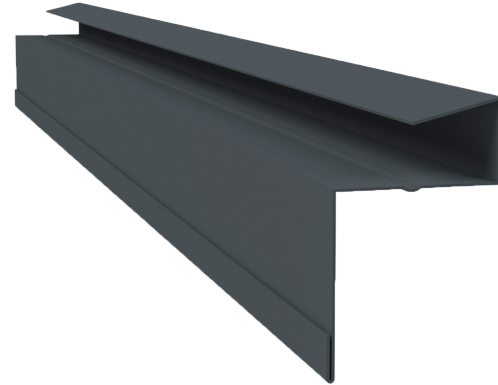
Compatibility

18mm Version:

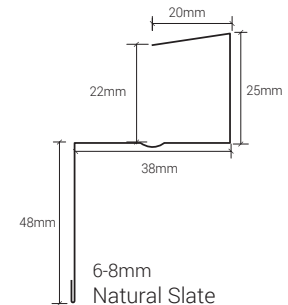
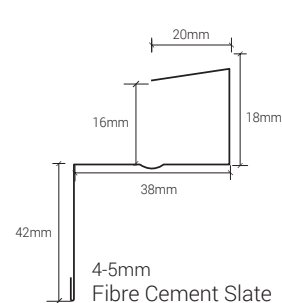
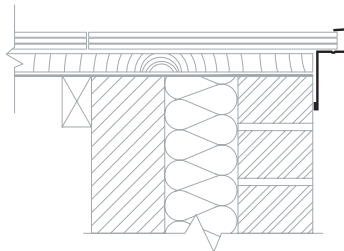
Suitable for a maximum individual slate thickness of 4-5mm.

25mm Version:

Suitable for a maximum individual slate thickness of 6-8mm.



bre





Slate Dry Verge (T1) - Steel

Slate Dry Verge (T1) - Galvanised Steel

Code	Size	Material	Pk Qty.
C01G	18mm	Polyester Coated Galvanised Steel	10
C01NG	25mm	Polyester Coated Galvanised Steel	10
C01GT	18mm	Plastisol Textured Galvanised Steel	10
C01NGT	25mm	Plastisol Textured Galvanised Steel	10

Available Colours: Black  Blue/Black  Brown 

Available Lengths: 3000mm

Compatibility

18mm Version:

Suitable for a maximum individual slate thickness of 4-5mm.

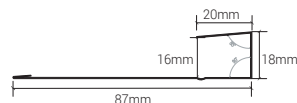
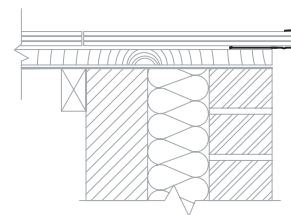
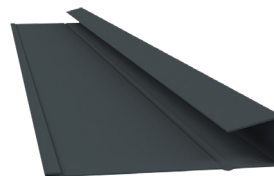
25mm Version:

Suitable for a maximum individual slate thickness of 6-8mm.

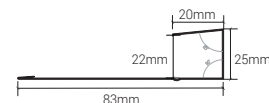
All trims are over batten fixed.



bre



4-5mm Fibre Cement Slate



6-8mm Natural Slate



Slate Dry Verge (T2) - Steel

Slate Dry Verge (T2) - Galvanised Steel

Code	Size	Material	Pk Qty.
C02G	18mm	Polyester Coated Galvanised Steel	8
C02NG	25mm	Polyester Coated Galvanised Steel	8
C02GT	18mm	Plastisol Textured Galvanised Steel	8
C02NGT	25mm	Plastisol Textured Galvanised Steel	8

Available Colours: Black  Blue/Black  Brown 

Available Lengths: 3000mm

Compatibility

18mm Version:

Suitable for a maximum individual slate thickness of 4-5mm.

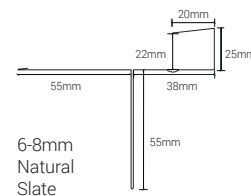
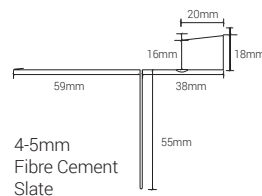
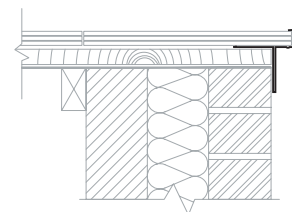
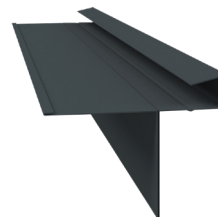
25mm Version:

Suitable for a maximum individual slate thickness of 6-8mm.

All trims are over batten fixed.



bre





Slate Dry Verge (T2) - uPVC

Slate Dry Verge (T2) - uPVC

Code	Size	Material	Pk Qty.
C02P	18mm	Extruded UV inhibited uPVC	8
C02NP	25mm	Extruded UV inhibited uPVC	8
C02LP	32mm	Extruded UV inhibited uPVC	8

Available Colours: Black ■

Available Lengths: 3000mm

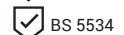
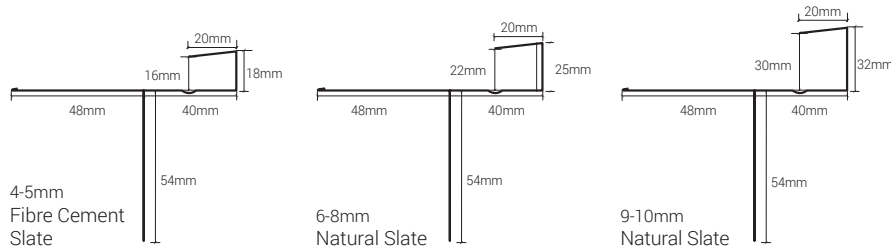
Compatibility

18mm Version: Suitable for a maximum individual slate thickness of 4-5mm.

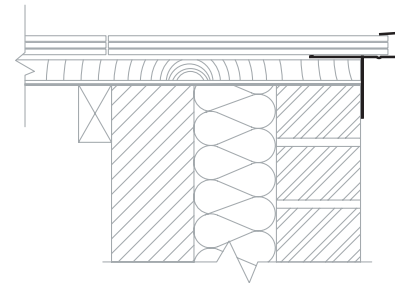
25mm Version: Suitable for a maximum individual slate thickness of 6-8mm.

32mm Version: Suitable for a maximum individual slate thickness of 9-10mm.

All trims are over batten fixed.



bre





TILE DRY VERGE SYSTEMS





Tile Dry Verge (T1)

Tile Dry Verge (T1) - Aluminium

Code	Size	Material	Pk Qty.
C09S	45mm	Aluminium	4
C09	55mm	Aluminium	4
C09L	65mm	Aluminium	4
C09F	Angle Piece (Batten Protector)	Aluminium	4

Available Colours: Black ■ Blue/Black ■ Brown ■

Available Lengths: 3000mm

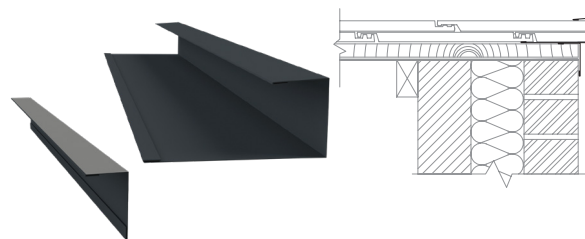
Compatibility

45mm Version: Suitable for a maximum individual tile thickness of 20mm.

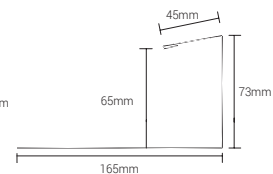
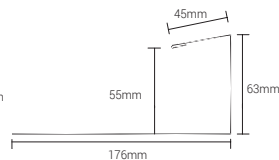
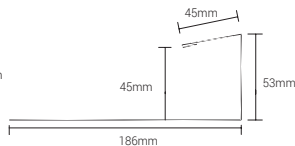
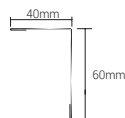
55mm Version: Suitable for a maximum individual tile thickness of 25mm.

65mm Version: Suitable for a maximum individual tile thickness of 30mm.

All trims are over batten fixed.



bre



Tile Dry Verge

Tile Dry Verge - Aluminium

Code	Size	Material	Pk Qty.
C08S	50mm	Aluminium	4
C08	65mm	Aluminium	4
C08L	85mm	Aluminium	4

Available Colours: Black  Blue/Black  Brown 

Available Lengths: 3000mm

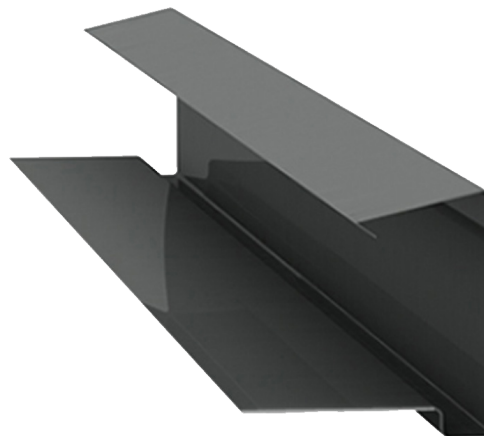
Compatibility

50mm Version: Suitable for a maximum individual tile thickness of 22mm.

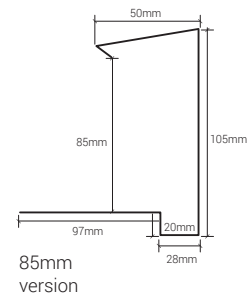
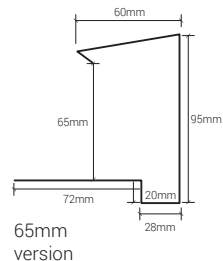
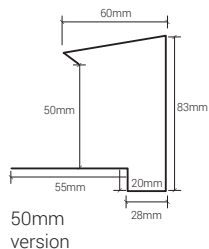
65mm Version: Suitable for a maximum individual tile thickness of 30mm.

85mm Version: Suitable for a maximum individual tile thickness of 40mm.

All trims are over batten fixed.



bre





Tile Dry Verge (T2)

Alternative Tile Dry Verge (T2) - Aluminium

Code	Size	Material	Pk Qty.
C08TS	45mm	Aluminium	4
C08T	55mm	Aluminium	4
C08TL	65mm	Aluminium	4

Available Colours: Black  Blue/Black  Brown 

Available Lengths: 3000mm

Compatibility

45mm Version: Suitable for a maximum individual tile thickness of 20mm.

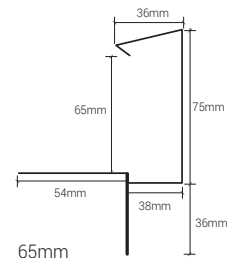
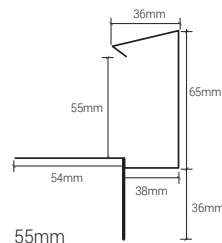
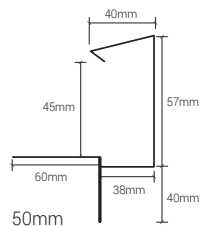
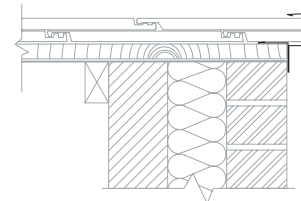
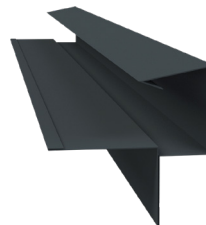
55mm Version: Suitable for a maximum individual tile thickness of 25mm.

65mm Version: Suitable for a maximum individual tile thickness of 30mm.

All trims are over batten fixed.



bre





Tile Dry Verge (T1) - Steel

Tile Dry Verge (T1) - Galvanised Steel

Code	Size	Material	Pk Qty.
C09GTS	45mm	Plastisol Textured Galvanised Steel	4
C09GT	55mm	Plastisol Textured Galvanised Steel	4
C09GTL	65mm	Plastisol Textured Galvanised Steel	4
C09GTF	Angle Piece (Batten Protector)	Plastisol Textured Galvanised Steel	4

Available Colours: Black  Blue/Black  Brown 

Available Lengths: 3000mm

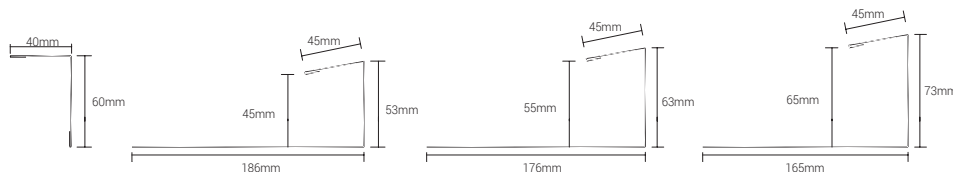
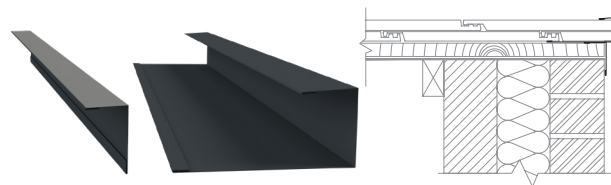
Compatibility

45mm Version: Suitable for a maximum individual tile thickness of 20mm.

55mm Version: Suitable for a maximum individual tile thickness of 25mm.

65mm Version: Suitable for a maximum individual tile thickness of 30mm.

All trims are over batten fixed.





Tile Dry Verge (T2) - Steel

Alternative Tile Dry Verge (T2) - Galvanised Steel

Code	Size	Material	Pk Qty.
C08TGTS	45mm	Plastisol Textured Galvanised Steel	4
C08TGT	55mm	Plastisol Textured Galvanised Steel	4
C08GTGL	65mm	Plastisol Textured Galvanised Steel	4

Available Colours: Black  Blue/Black  Brown 

Available Lengths: 3000mm

Compatibility

45mm Version: Suitable for a maximum individual tile thickness of 20mm.

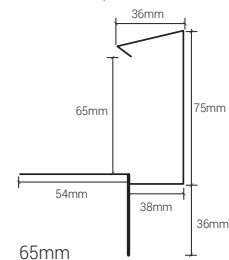
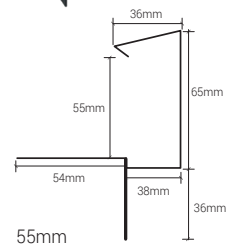
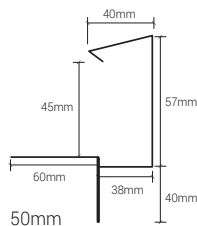
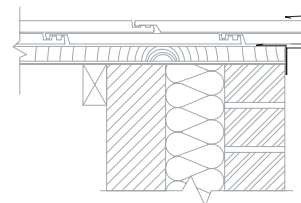
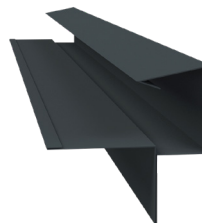
55mm Version: Suitable for a maximum individual tile thickness of 25mm.

65mm Version: Suitable for a maximum individual tile thickness of 30mm.

All trims are over batten fixed.



bre





Tile Dry Verge (T2) - uPVC

Tile Dry Verge (T2) - uPVC

Code	Size	Colour		Pk Qty.
C08PS	50mm	Blk	Extruded UV inhibited uPVC	4
C08P	60mm	Blk	Extruded UV inhibited uPVC	4

Available Colours: Black 

Available Lengths: 3000mm

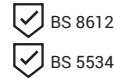
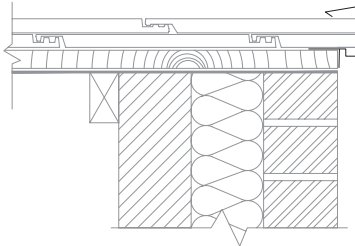
Compatibility

Fully compatible with most tiles on the market.
Suitable for brick, render & bargeboard construction.

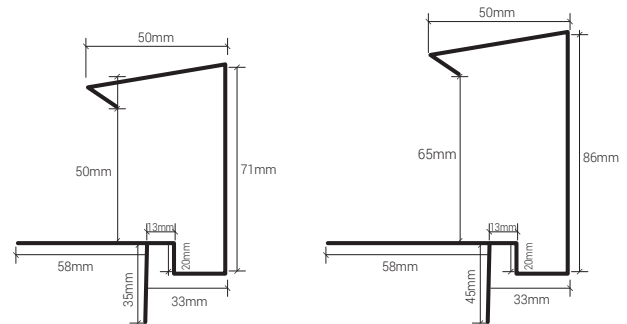
50mm Version: Suitable for a maximum individual tile thickness of 25mm.

65mm Version: Suitable for a maximum individual tile thickness of 32mm.

All trims are over batten fixed.



bre







Slate Dry Verge Jointers

Code	Description	Size	Qty
Aluminium			
C02J	Slate Dry Verge Alu. (T2)	18mm x 70mm (Jointer)	8
C02NJ	Slate Dry Verge Alu. (T2)	25mm x 70mm (Jointer)	8
C03J	Retro Slate Dry Verge Alu. (T2)	18mm x 70mm (Jointer)	8
C03NJ	Retro Slate Dry Verge Alu. (T2)	25mm x 70mm (Jointer)	8
Steel			
C02GJ	Slate Dry Verge Steel (T2)	18mm x 70mm (Jointer)	8
C02NGJ	Slate Dry Verge Steel (T2)	25mm x 70mm (Jointer)	8
uPVC			
C02PJ	Slate Dry Verge uPVC (T2)	Universal Jointer	8
C03PJ	Retro Slate Dry Verge uPVC (T2)	Universal Jointer	8



Tile Dry Verge Jointers

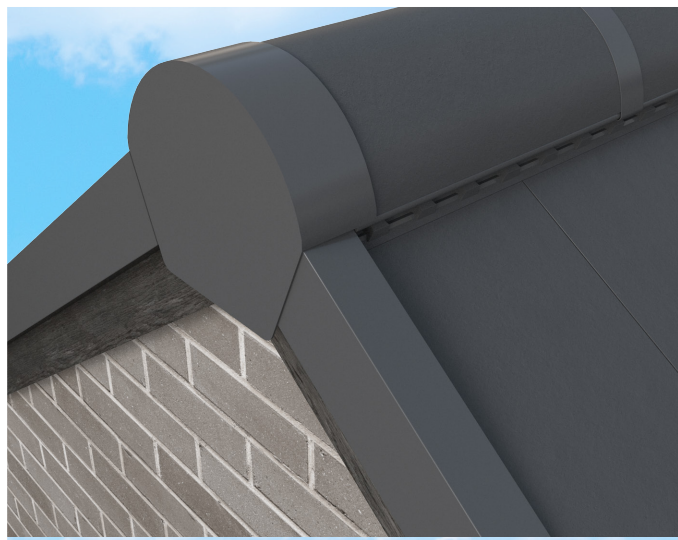
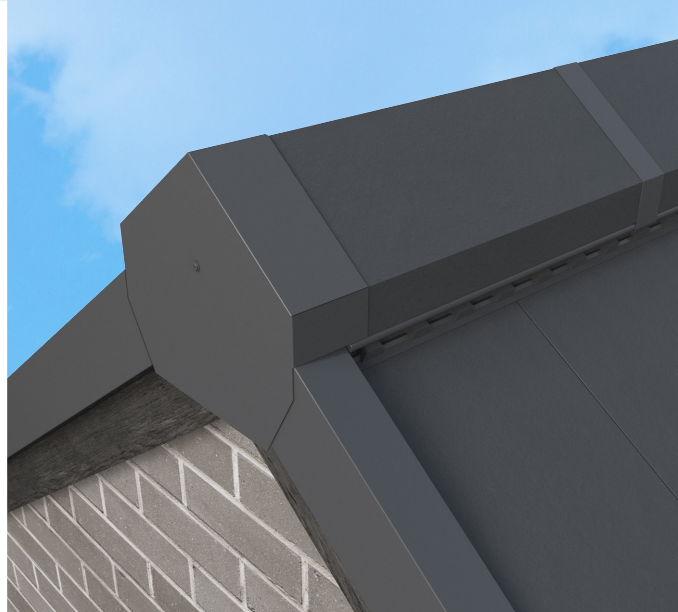
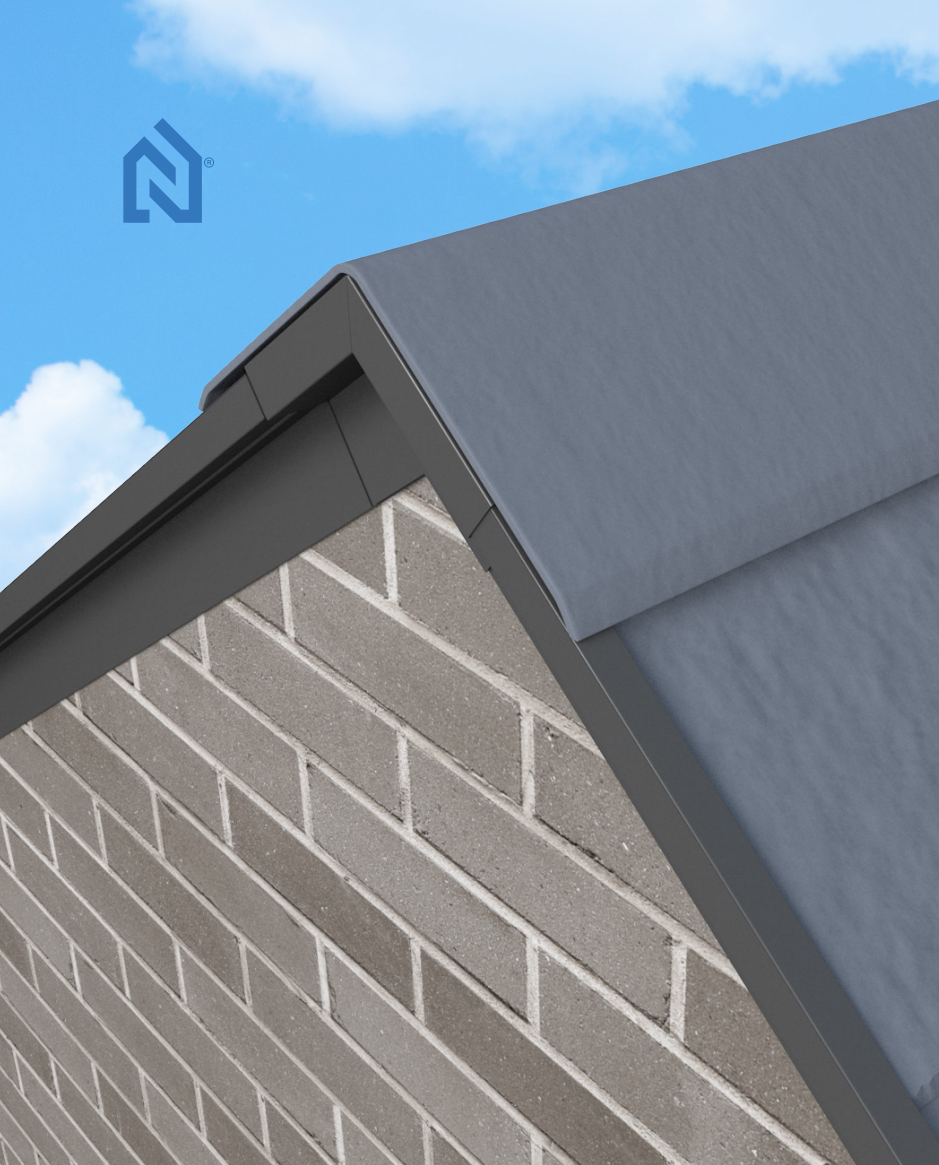
Code	Description	Size
Aluminium		
C09JS	Tile Dry Verge Alu. (T1)	45mm Jointer x 70mm
C09J	Tile Dry Verge Alu. (T1)	55mm Jointer x 70mm
C09JL	Tile Dry Verge Alu. (T1)	65mm Jointer x 70mm
C09C45	Tile Dry Verge Alu. (T1)	45mm Bell-Cast Jointer x 500mm
C09C55	Tile Dry Verge Alu. (T1)	55mm Bell-Cast Jointer x 500mm
C09C65	Tile Dry Verge Alu. (T1)	65mm Bell-Cast Jointer x 500mm
C08JS	Tile Dry Verge Alu. (T2)	50mm (Jointer)
C08J	Tile Dry Verge Alu. (T2)	65mm (Jointer)
C08JL	Tile Dry Verge Alu. (T2)	85mm (Jointer)
C08JES	Tile Dry Verge Alu. (T2)	50mm (Jointer)
C08JE	Tile Dry Verge Alu. (T2)	65mm (Jointer)
C08TJS	Tile Dry Verge Alu. (T2)	45mm Jointer x 70mm
C08TJ	Tile Dry Verge Alu. (T2)	55mm Jointer x 70mm
C08TJL	Tile Dry Verge Alu. (T2)	65mm Jointer x 70mm



Code	Description	Size
Steel		
C09GTJS	Tile Dry Verge Steel Txt. (T1)	45mm Jointer x 70mm
C09GTJ	Tile Dry Verge Steel Txt. (T1)	55mm Jointer x 70mm
C09GTJL	Tile Dry Verge Steel Txt. (T1)	65mm Jointer x 70mm
C09GTC45	Tile Dry Verge Steel Txt. (T1)	45mm Bell-Cast Jointer x 500mm
C09GTC55	Tile Dry Verge Steel Txt. (T1)	55mm Bell-Cast Jointer x 500mm
C09GTC65	Tile Dry Verge Steel Txt. (T1)	65mm Bell-Cast Jointer x 500mm
C08GTJS	Tile Dry Verge Steel Txt. (T2)	45mm Jointer x 70mm
C08GTJ	Tile Dry Verge Steel Txt. (T2)	55mm Jointer x 70mm
C08GTJL	Tile Dry Verge Steel Txt. (T2)	65mm Jointer x 70mm

uPVC

C08PSJ	Tile Dry Verge uPVC	Universal Jointer 50mm
C08PJ	Tile Dry Verge uPVC	Universal Jointer 65mm
C08PFABL	Tile Dry Verge uPVC	Apex Jointer
C08PFJIBL	Tile Dry Verge uPVC	Stand. Int Jointer
C08PFEBL	Tile Dry Verge uPVC	Stand. End Cap
C08PSFJEBL	Tile Dry Verge uPVC	External Jointer
C08PFJEBL	Tile Dry Verge uPVC	External Jointer
C08PSFBL	Tile Dry Verge uPVC	Jointer Pack 50mm
C08PFBL	Tile Dry Verge uPVC	Jointer Pack 65mm





Slate & Tile Dry Verge Apex Units

Slate Dry Verge (T2) Apex Units - Aluminium

Code	Size	Colour	Pk. Qty
C02A	20mm	Blk • Blue/Blk • Brwn	N/A
C02NA	27mm	Blk • Blue/Blk • Brwn	N/A
C02LA	34mm	Blk • Blue/Blk • Brwn	N/A

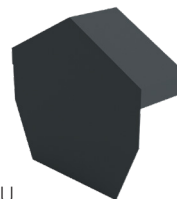
Available in various roof pitches: 90°, 105°, 120°, 135°



C02A

Tile Dry Verge Universal Apex Units - Aluminium

Code	Pitch	Colour	Pk. Qty
C08AU90	90°	Black • Blue/Black • Brown • White	N/A
C08AU105	105°	Black • Blue/Black • Brown • White	N/A
C08AU120	120°	Black • Blue/Black • Brown • White	N/A
C08AU135	135°	Black • Blue/Black • Brown • White	N/A



C08AU

Tile Dry Verge Half-Round Apex Units - Aluminium

Code	Pitch	Colour	Pk. Qty
C08AHR90	Half Round	Black • Blue/Black • Brown • White	N/A

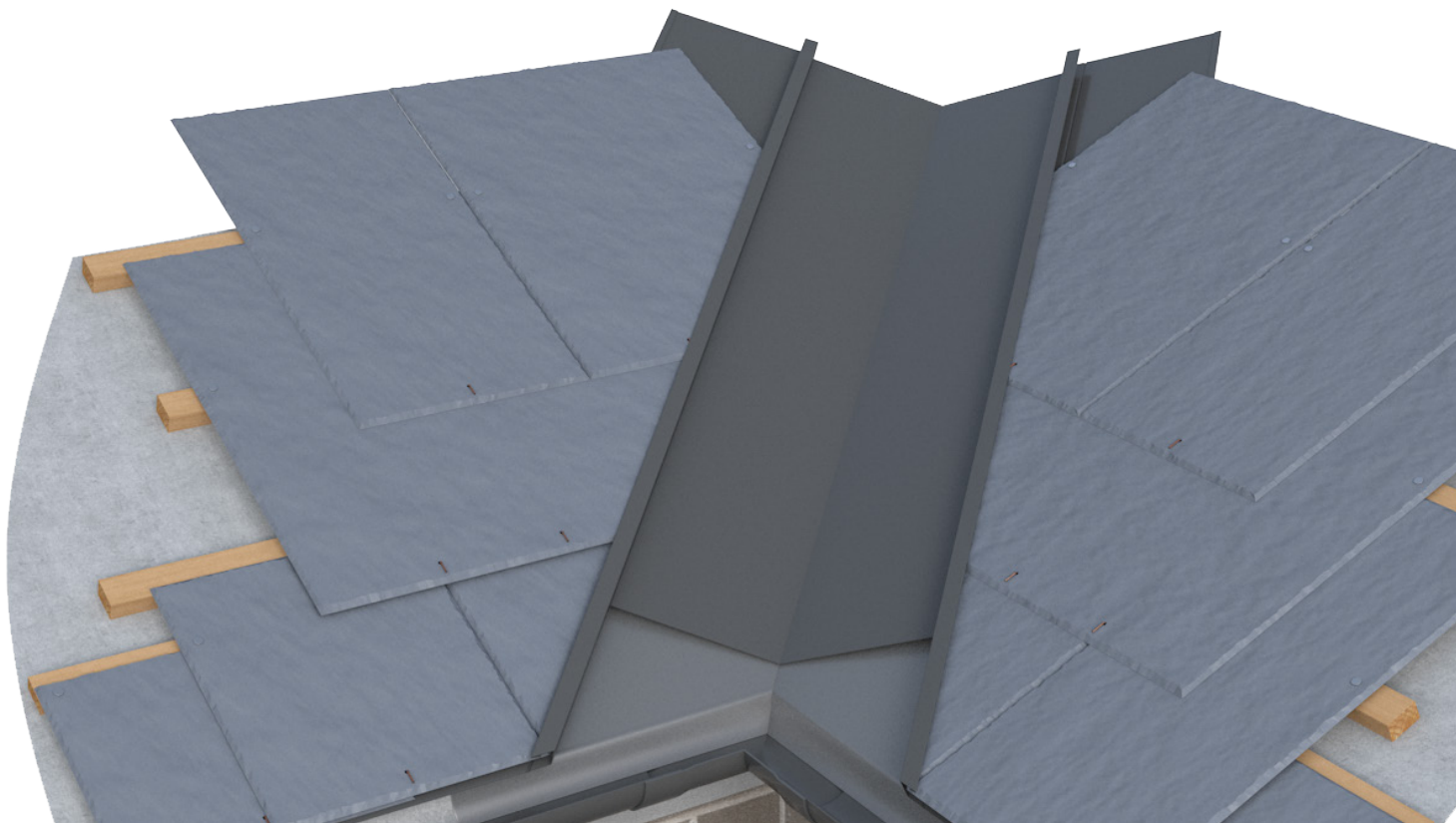


C08HR



DRY VALLEY

VALLEY TRIM & VALLEY TROUGH





Slate Valley Trim & Trough

SLATE VALLEY TRIM - Aluminium

The **Slate Valley Trim** is specifically used for a dry roof valley application. Due to the high volume of water travelling down the valley a patented water drip & multiple outlet system runs along the trim.

Code	Size	Material	Pk Qty.
C07	18mm	Aluminium	10
C07N	25mm	Aluminium	10

SLATE VALLEY TRIM - Galvanised Steel

Code	Size	Material	Pk Qty.
C07G	18mm	Polyester Coated Galvanised Steel	10
C07NG	25mm	Polyester Coated Galvanised Steel	10

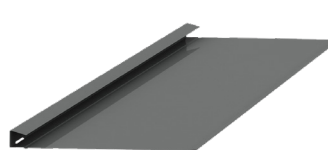
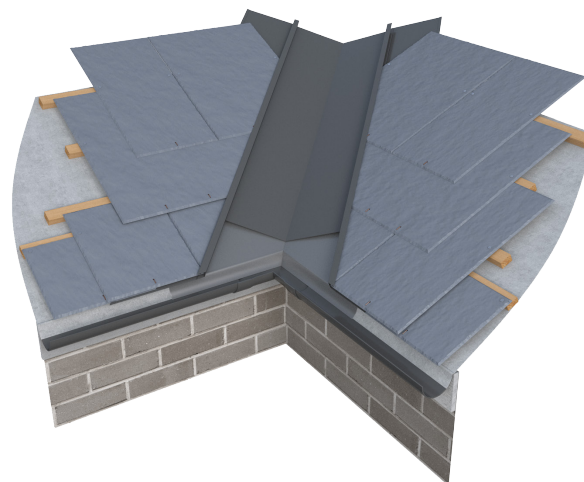
VALLEY TROUGH - Aluminium

It is an excellent alternative to lead, more cost effective, tougher, more resistant to accidental damage and significantly reduces installation time.

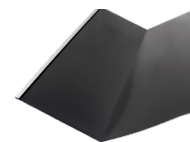
Code	Size	Material	Pk Qty.
C12	460mm	Aluminium	5

Available Colours: Black  Blue/Black 

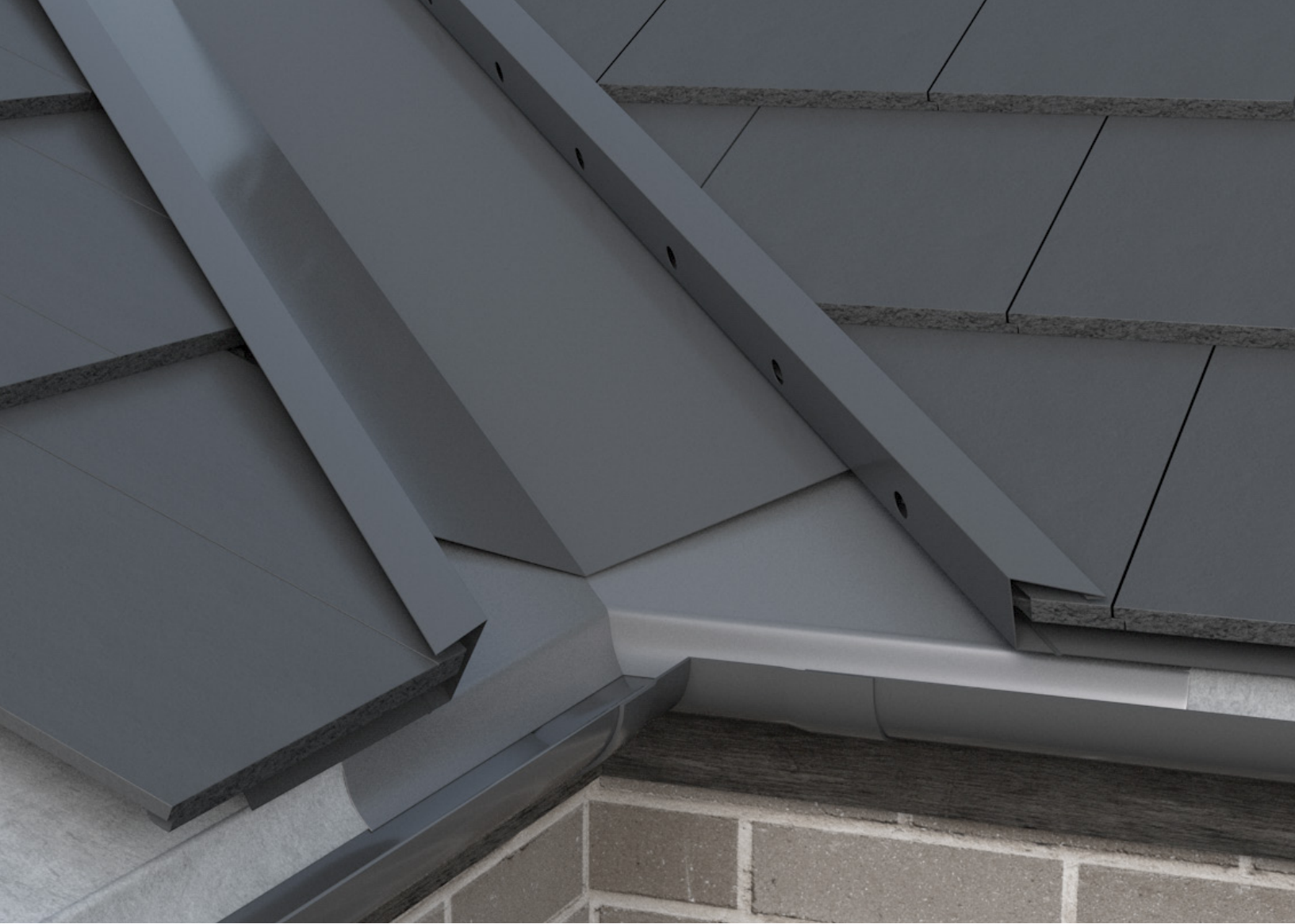
Available Lengths: 3000mm



C07



C12





Tile Valley Trim & Trough

TILE VALLEY TRIM - Aluminium

The **Tile Valley Trim** is specifically used for a dry roof valley application. Due to the high volume of water travelling down the valley a patented water drip and multiple outlet system runs along the trim.

Code	Size	Material	Pk Qty.
C15-45	45mm	Aluminium	4
C15-55	55mm	Aluminium	4
C15-65	65mm	Aluminium	4

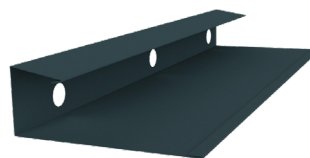
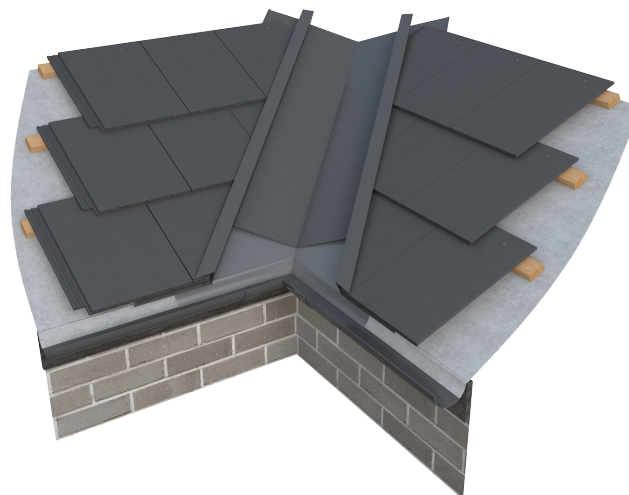
VALLEY TROUGH - Aluminium

Aluminium Valley Trough is an excellent alternative to lead, more cost effective, tougher, and more resistant to accidental damage. The use of Aluminium Valley Troughs have significantly reduced installation time over traditional methods.

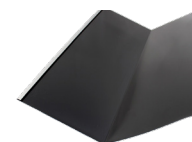
Code	Size	Material	Pk Qty.
C12	460mm	Aluminium	4

Available Colours: Black  Blue/Black 

Available Lengths: 3000mm



C15

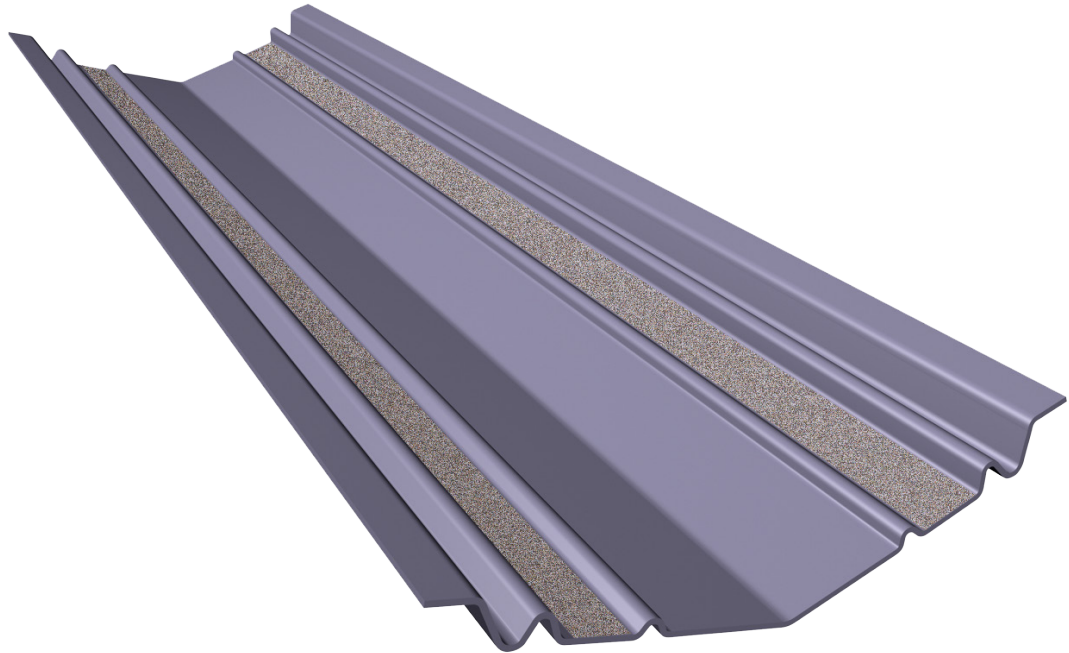


C12



GRP VALLEY TROUGHS

LEAD ALTERNATIVE - STANDARD RANGE





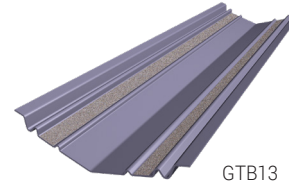
GRP - Standard Range



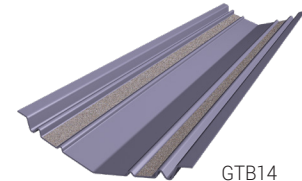
Our **GRP Valley Troughs** can be used with clay or concrete tiles or slate roofs, as well as profiled GRP or metal roofs. Options are available for wet or dry fixing (with or without mortar).

GTB13 Narrow Valley Trough - [Single lap tile - Over batten fix](#)

Code	Size	Colour	Pk Qty.
GTB13	360mm x 3m	N/A	N/A



GTB13



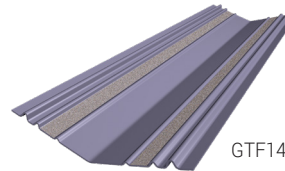
GTB14

GTB14 Standard Valley Trough - [Single lap tile - Over batten fix](#)

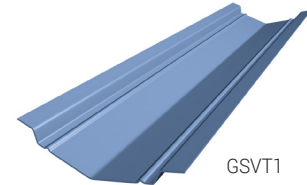
Code	Size	Colour	Pk Qty.
GTB14	400mm x 3m	N/A	N/A

GTF14 Standard Valley Trough - [Flat fix](#)

Code	Size	Colour	Pk Qty.
GTF14	400mm x 3m	N/A	N/A



GTF14



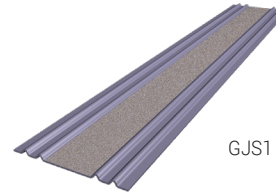
GSVT1

GSVT1 Slate Valley Trough - [Natural or Man-made slates](#)

Code	Size	Colour	Pk Qty.
GSVT1	330mm x 3m	N/A	N/A

GJS1 Secret Joining Strip

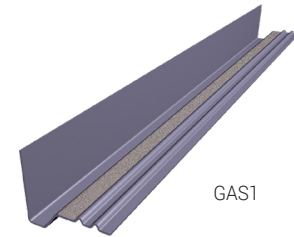
Code	Size	Colour	Pk Qty.
GJS1	216mm x 3m	N/A	N/A



GJS1

GAS1 Abutment Soaker

Code	Size	Colour	Pk Qty.
GAS1	140mm x 3m	N/A	N/A

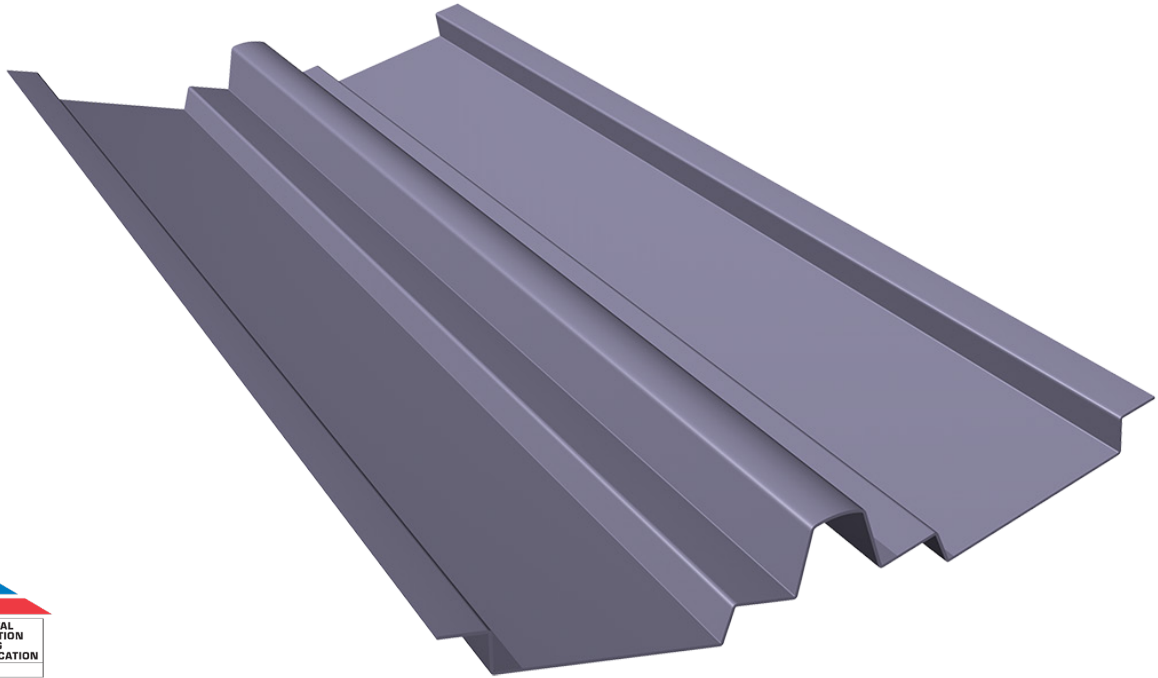


GAS1



GRP VALLEY TROUGHS

LEAD ALTERNATIVE





GRP - Dry Fix Range



Our **GRP Valley Troughs** can be used with clay or concrete tiles or slate roofs, as well as profiled GRP or metal roofs. Options are available for wet or dry fixing (with or without mortar).

GDFVT70 Valley Trough - Natural or Man-made slates

Code	Size	Colour	Pk Qty.
GDFVT70	400mm x 3m	N/A	N/A

GDFVT110 Valley Trough - Concrete/clay tiles or slates

Code	Size	Colour	Pk Qty.
GDFVT110	400mm x 3m	N/A	N/A

GDFVTUB55 Valley Trough - Natural or Man-made slates

Code	Size	Colour	Pk Qty.
GDFVTUB55	400mm x 3m	N/A	N/A

GDFVTUB80 Valley Trough - Low Profile or plain tiles

Code	Size	Colour	Pk Qty.
GDFVTUB80	400mm x 3m	N/A	N/A

GDFVTUB105 Valley Trough - High profile tiles

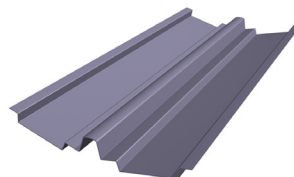
Code	Size	Colour	Pk Qty.
GDFVTUB105	400mm x 3m	N/A	N/A

GDFBS70 Dry-Fix Bonding Strip - Natural or Man-made slates

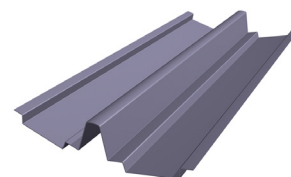
Code	Size	Colour	Pk Qty.
GDFBS70	225mm x 3m	N/A	N/A

GDFBS110 Dry-Fix Bonding Strip - Concrete/clay tiles or slates

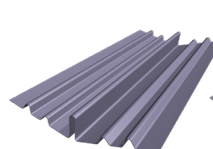
Code	Size	Colour	Pk Qty.
GDFBS110	216mm x 3m	N/A	N/A



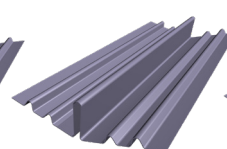
GDFVT70



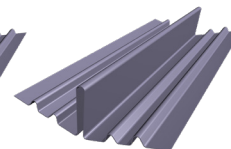
GDFVT110



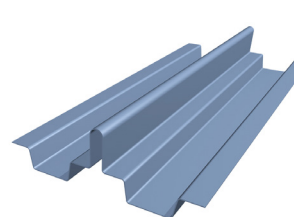
GDFVTUB55



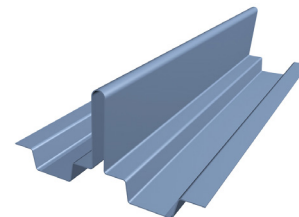
GDFVTUB80



GDFVTUB105



GDFBS70

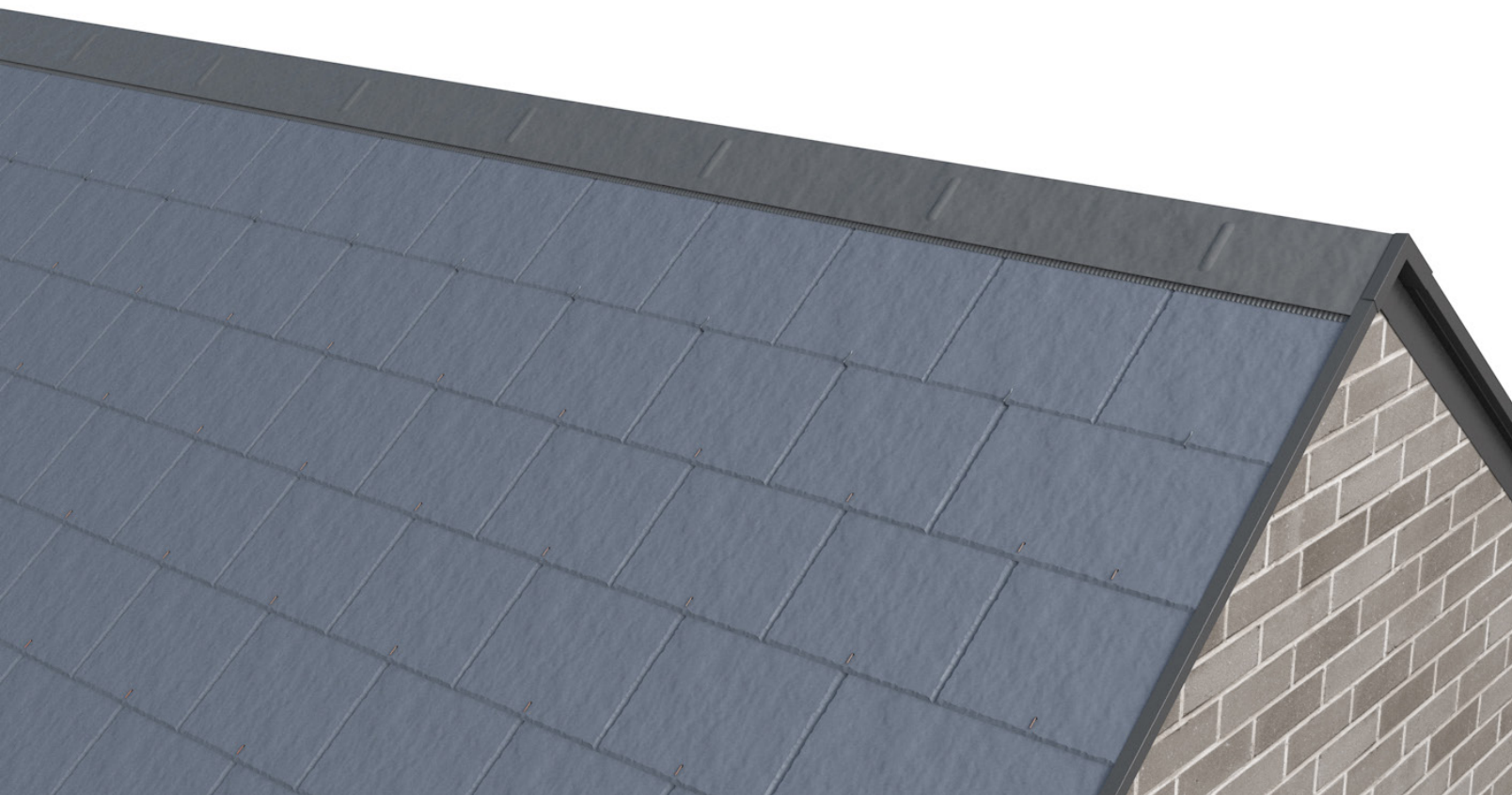


GDFBS110



DRY RIDGE

RIDGE CAPPING & RIDGE KITS





Dry Ridge Capping

RIDGE CAPPING - Aluminium

Code	Size	Material	Pk Qty.
C05S-2400	65mm x 65mm	Aluminium	10
C05-2400	135mm x 135mm	Aluminium	10
C05S	65mm x 65mm	Aluminium	10
C05	135mm x 135mm	Aluminium	10

RIDGE CAPPING - Galvanised Steel

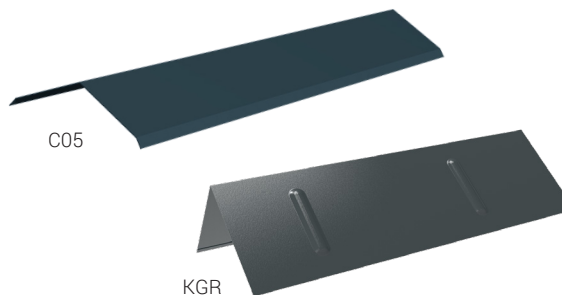
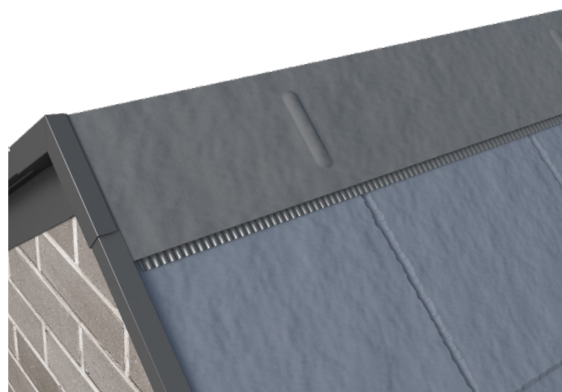
Code	Size	Material	Pk Qty.
KGR90	156mm x 156mm	Plastisol Coated Galvanised Steel	5
KGR105	156mm x 156mm	Plastisol Coated Galvanised Steel	5
KGR120	156mm x 156mm	Plastisol Coated Galvanised Steel	5
KGR135	156mm x 156mm	Plastisol Coated Galvanised Steel	5

Available Colours: Black  Blue/Black  Brown  Terracotta 

Available Lengths: 3000mm

Compatibility

Fully compatible with most roofing applications on the market.
Can be bespoke manufactured to virtually any profile to suit all
slate and tile makes and individual requirements.





✓ BS 8612

✓ BS 5534

bre



Universal Dry Ridge Kit

Code	Size	Colour
DRUA01	5m	Anthracite
DRUA02	6m	Anthracite
DRUC01	5m	Copper

5m RIDGE KIT - ANTHRACITE

- 1 X VENTILATED ECO RIDGE ROLL 5m (ANTHRACITE)
- 11 X UNIVERSAL DRY RIDGE UNION BRACKET
- 11 X UNIVERSAL DRY RIDGE SCREWS & WASHERS
- 11 X UNIVERSAL DRY RIDGE CLAMPING PLATES
- 8 X UNIVERSAL DRY RIDGE BATTEN METAL STRAP

6m RIDGE KIT - ANTHRACITE

- 1 X VENTILATED RIDGE ROLL 6m (ANTHRACITE)
- 13 X UNIVERSAL DRY RIDGE UNION BRACKET
- 13 X UNIVERSAL DRY RIDGE SCREWS & WASHERS
- 13 X UNIVERSAL DRY RIDGE CLAMPING PLATES
- 10 X UNIVERSAL DRY RIDGE BATTEN METAL STRAP

5m RIDGE KIT - COPPER

- 1 X VENTILATED COPPER RIDGE ROLL 5m
- 11 X UNIVERSAL DRY RIDGE UNION BRACKET
- 11 X UNIVERSAL DRY RIDGE SCREWS & WASHERS
- 11 X UNIVERSAL DRY RIDGE CLAMPING PLATES
- 8 X UNIVERSAL DRY RIDGE BATTEN METAL STRAP







UNIVERSAL DRY RIDGE UNION BRACKET

Code	Description
DRUB01	Union Bracket



UNIVERSAL DRY RIDGE UNION BRACKET & SCREWS KIT

Code	Description
DRSC02	Union Brackets & Screws Kit



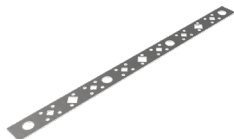
UNIVERSAL DRY RIDGE SCREWS & CLAMPING PLATES

Code	Description
DRSC01	Screws & Clamping Plates



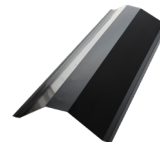
UNIVERSAL DRY RIDGE BATTEN METAL STRAP

Code	Description
DRSC03	Batten Metal Strap



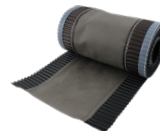
RIDGE HIP TRAY

Code	Description
DRHTPVC	Ridge Hip Tray



VENTILATED RIDGE ROLLS

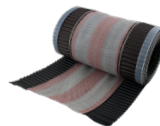
Code	Description	Size
RREC01	ECO ROLL	5m
RREC02	ECO ROLL	6m



Code	Description	Size
RRXS01	X-STRONG Roll	5m



Code	Description	Size
RRCL01	CLASSIC Roll	5m

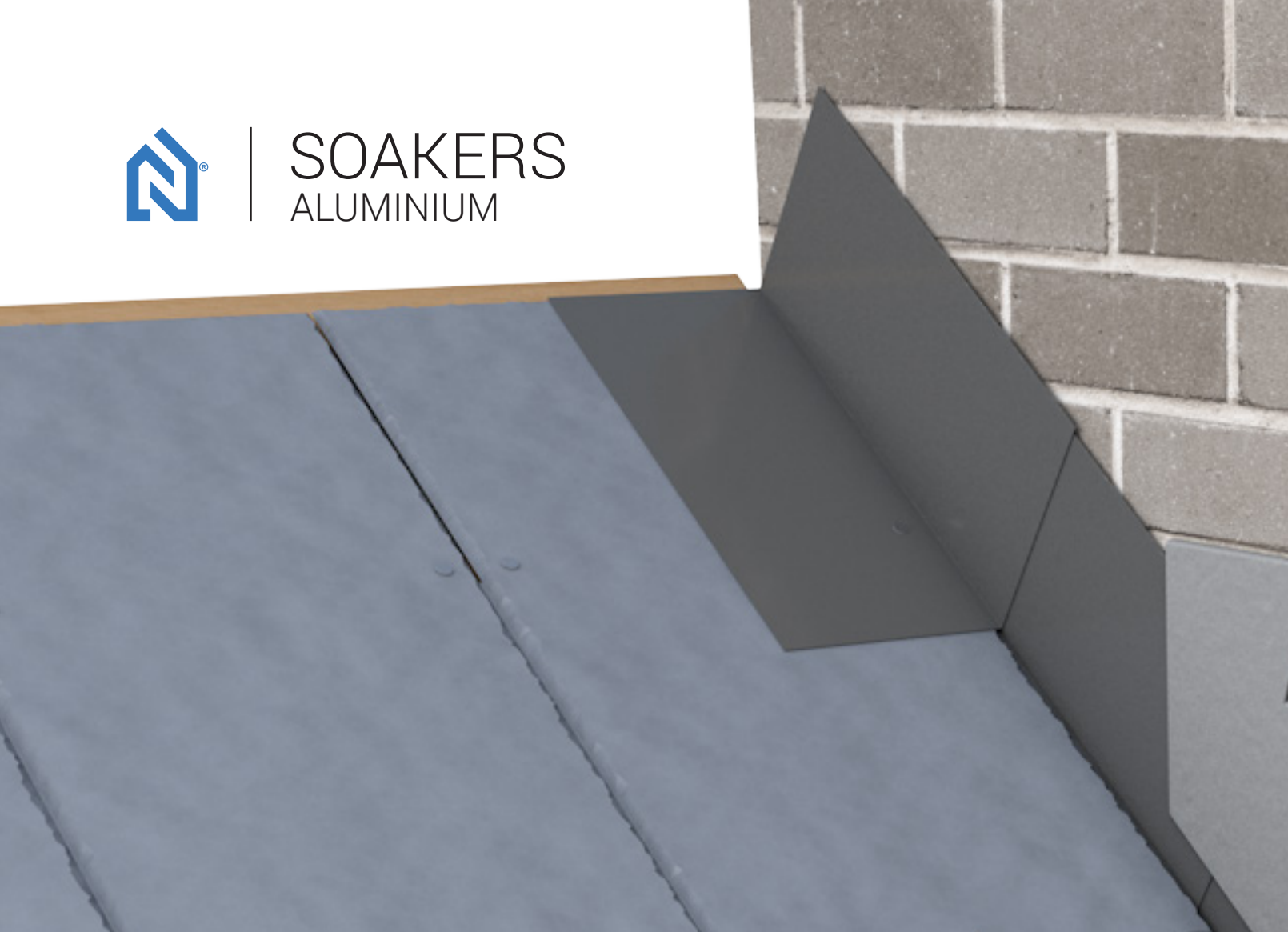


Code	Description	Size
RRCOP	COPPER Roll	5m





SOAKERS
ALUMINIUM





Aluminium Soakers

SOAKERS - Aluminium

Code	Size	Material	Pk Qty.
C06SBL	150mm x 100mm x 330mm	Aluminium	50
C06SBB	150mm x 100mm x 330mm	Aluminium	50
C06BL	150mm x 150mm x 330mm	Aluminium	50
C06BB	150mm x 150mm x 330mm	Aluminium	50
C06BR	150mm x 150mm x 330mm	Aluminium	50

Other sizes and mill finish soakers available on request.

Suits all slate and flat tile applications

Available Colours: Black  Blue/Black  Brown 

CONTINUOUS SOAKERS - Aluminium

Code	Colour	Material	Pk Qty.
C14BL	Black	Aluminium	10
C14BB	Blue/Black	Aluminium	10

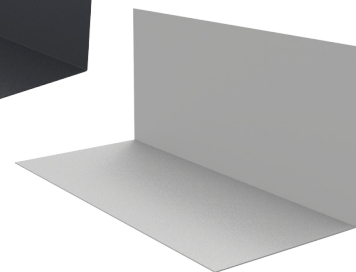
Suits all slate and flat tile applications

Available Colours: Black  Blue/Black  Brown 

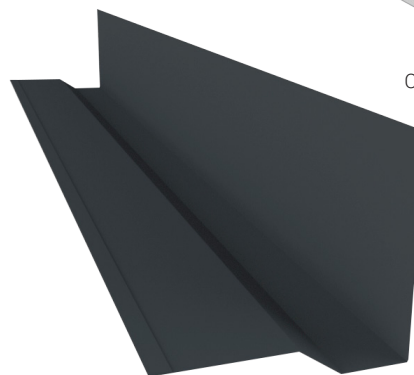
Available Lengths: 3000mm



C06



C06 - Milled Finish

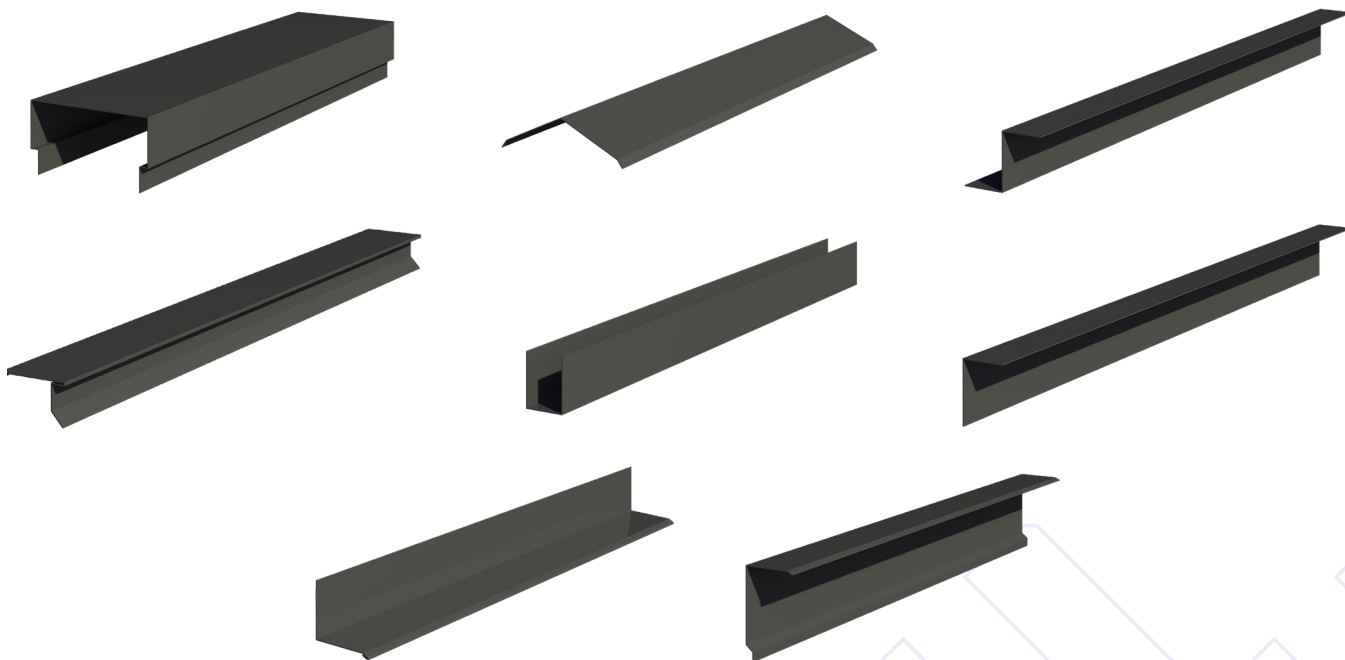


C14



FLASHINGS

ALUMINIUM & STEEL





Flashings

PARAPET CAPPING

Code	Material	Thickness	Colours
KYTFC01	Aluminium*	0.7mm	Blk • Brwn • Slate Grey • Wht
KYTFC02	Aluminium**	0.7mm, 1mm, 2mm	Any RAL Colour
KYTFC03	Galv. Steel*	0.5mm	Blk • Slate Grey
KYTFC04	Galv. Steel***	0.7mm	Blk • Anthracite

RIDGE CAP

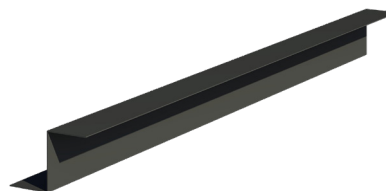
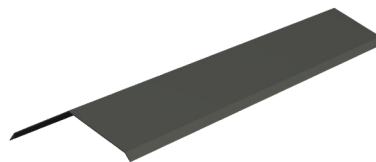
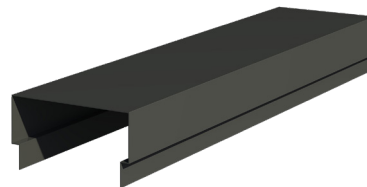
Code	Material	Thickness	Colours
KYTRC01	Aluminium*	0.7mm	Blk • Brwn • Slate Grey • Wht
KYTRC02	Aluminium**	0.7mm, 1mm, 2mm	Any RAL Colour
KYTRC03	Galv. Steel*	0.5mm	Blk, Slate Grey
KYTRC04	Galv. Steel***	0.7mm	Blk, Anthracite

'Z' FLASHING

Code	Material	Thickness	Colours
KYTFZF01	Aluminium*	0.7mm	Blk • Brwn • Slate Grey • Wht
KYTFZF02	Aluminium**	0.7mm, 1mm, 2mm	Any RAL Colour
KYTFZF03	Galv. Steel*	0.5mm	Blk • Slate Grey
KYTFZF04	Galv. Steel***	0.7mm	Blk • Anthracite

*Polyester Coated **Powder Coated ***Plastisol Coated

CAN BE FULLY CUSTOMISED TO SUIT YOUR NEEDS





Flashings

DRIP EDGE

Code	Material	Thickness	Colours
KYTFDE01	Aluminium*	0.7mm	Blk • Brwn • Slate Grey • Wht
KYTFDE02	Aluminium**	0.7mm, 1mm, 2mm	Any RAL Colour
KYTFDE03	Galv. Steel*	0.5mm	Black, Slate Grey
KYTFDE04	Galv. Steel***	0.7mm	Black, Anthracite

'U' TRIM

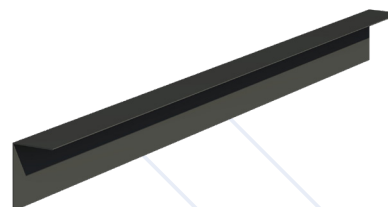
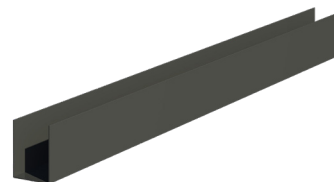
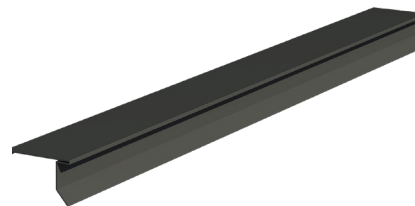
Code	Material	Thickness	Colours
KYTFUT01	Aluminium*	0.7mm	Blk • Brwn • Slate Grey • Wht
KYTFUT02	Aluminium**	0.7mm, 1mm, 2mm	Any RAL Colour
KYTFUT03	Galv. Steel*	0.5mm	Blk • Slate Grey
KYTFUT04	Galv. Steel***	0.7mm	Blk • Anthracite

'L' FLASHING

Code	Material	Thickness	Colours
KYTFLF01	Aluminium*	0.7mm	Blk • Brwn • Slate Grey • Wht
KYTFLF02	Aluminium**	0.7mm, 1mm, 2mm	Any RAL Colour
KYTFLF03	Galv. Steel*	0.5mm	Blk • Slate Grey
KYTFLF04	Galv. Steel***	0.7mm	Blk • Anthracite

*Polyester Coated **Powder Coated ***Plastisol Coated

CAN BE FULLY CUSTOMISED TO SUIT YOUR NEEDS





Flashings

ROOF TO WALL

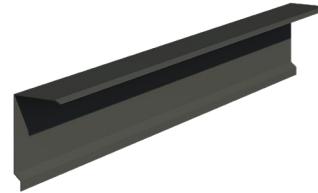
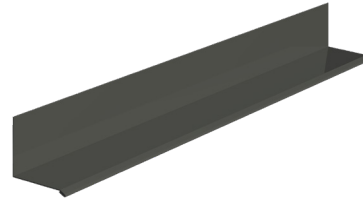
Code	Material	Thickness	Colours
KYTFRW01	Aluminium*	0.7mm	Blk • Brwn • Slate Grey • Wht
KYTFRW02	Aluminium**	0.7mm, 1mm, 2mm	Any RAL Colour
KYTFRW03	Galv. Steel*	0.5mm	Blk • Slate Grey
KYTFRW04	Galv. Steel***	0.7mm	Blk • Anthracite

BARGE

Code	Material	Thickness	Colours
KYTFB01	Aluminium*	0.7mm	Blk • Brwn • Slate Grey • Wht
KYTFB02	Aluminium**	0.7mm, 1mm, 2mm	Any RAL Colour
KYTFB03	Galv. Steel*	0.5mm	Blk • Slate Grey
KYTFB04	Galv. Steel***	0.7mm	Blk • Anthracite

*Polyester Coated **Powder Coated ***Plastisol Coated

CAN BE FULLY CUSTOMISED TO SUIT YOUR NEEDS



**BESPOKE ALUMINIUM FABRICATION
& FLASHING SERVICE AVAILABLE**



| EAVES VENTILATION
VENTILATION PRODUCTS

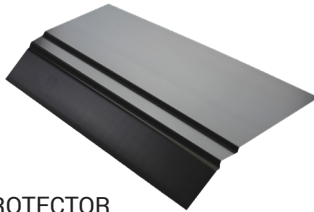


Eaves Ventilation



RAFTER ROLL

Code	Size	Pk Qty.
RPV300	300mm x 6m	10
RPV400	400mm x 6m	10
RPV600	600mm x 6m	10
RPV800	800mm x 6m	10



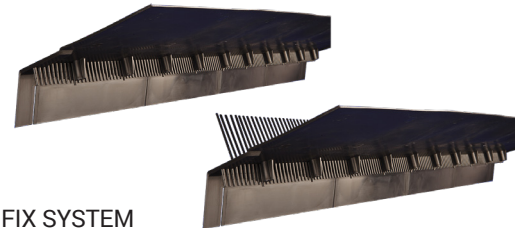
EAVES PROTECTOR

Code	Size	Pk Qty.
EP15	1.5m Lengths	10



OVER FASCIA VENT

Code	Size	Pk Qty.
OFV10	10mm x 1m	60
OFV25	25mm x 1m	50



ONE FIX SYSTEM

Code	Size	Pk Qty.
OVEP210	1m x 10mm (2 in 1)	10
OVEP310	1m x 10mm (3 in 1)	10



SCHEDULING SERVICE

FOR PRODUCT SPECIFICATION & QUANTITIES

NorthWest Aluminium offers an unbeatable technical service for all of our professional customers.

Our specialist team can provide accurate product specification and quantities for all elements of our building product range. This includes all dry verge, dry valley & dry ridge systems, soakers, flashings and ventilation products.

For more information visit:

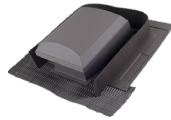
www.northwestaluminium.com / info@northwestaluminium.com



Additional Product Ranges

ROOF VENTILATION

NWA provide a range of high quality roofing products from some of the largest manufacturers of roof ventilation in the world.



WALL VENTILATION

We provide a wide selection of products specifically designed for wall ventilation.



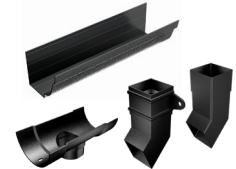
CAVITY TRAYS

We provide Block Cavity Trays, Brick Cavity Trays and Horizontal Cavity trays with varying position, pitch and size.



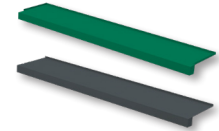
RAINWATER PRODUCTS

NorthWest Aluminium range of rainwater and cladding are designed and manufactured to provide the essential architectural features appropriate to traditionally designed buildings.



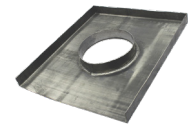
WINDOW CILLS

NorthWest Aluminium manufacture aluminium window sills in an extensive range of sizes and bespoke profiles to suit any window system.



CHIMNEY APRONS

Our Lead Chimney Trays are designed to prevent water penetration into the building through the chimney stack.



BESPOKE SERVICE

BESPOKE ALUMINIUM BENDING & FLASHING SERVICE AVAILABLE

Just email through a profile & dimensions to: info@northwestaluminium.com
For full range of products visit www.northwestaluminium.com

Notes





UK Office:

Unit N5 & N6, Kingmoor Park Central
Carlisle, Cumbria, England, CA6 4SE

+44 (0)1684 293702

+44 (0)1684 298481

info@northwestaluminium.com

www.northwestaluminium.com

Irl. Office:

Keenaghan, Kilmacrenan
Co. Donegal, Ireland, F92 DW64

+353 (0)74 91 39500

+353 (0)74 91 39519

info@northwestaluminium.com

www.northwestaluminium.com

