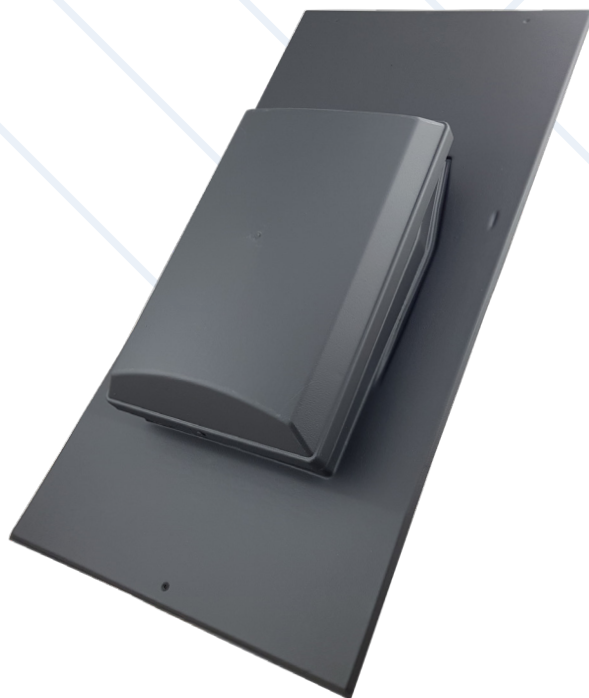


## TECHNICAL DATASHEET

# G3 Slate Vent

## GLIDEVALE COWL SLATE VENT



### Product Details

The low-profile cowl mirrors the popular G5 on a smaller scale, enabling use at high level in conjunction with G5 Ventilators at low level.

The G-Range are suitable for roof pitches between 20° and 60°.

### Product Features

- Colour-matched to blend in with adjacent slates as standard, making the ventilators almost indiscernible once installed.
- Driving rain and deluge rain resistance demonstrated by test data.
- High nett free ventilation area and low airflow resistance allow for an optimum spacing to avoid stagnant air pockets
- AA fire rating to BS 476: Part 3: 2004.
- Underlay opening protector, integral 4mm insect screen, and ventilator throat or extension sleeve meet design requirements of BS 5250.
- Designed and developed under BS EN ISO 9001.

### Technical

Performance:	Guaranteed actual nett free ventilation area: 10,000mm <sup>2</sup>
Spacing:	2.0m for 5,000mm <sup>2</sup> /m 1.0m for 10,000mm <sup>2</sup> /m 0.4m for 25,000mm <sup>2</sup> /m
Airflow resistance when used as SVP/extract terminal:	54m <sup>3</sup> /hr (15 litres/sec): 2.5Pa 108m <sup>3</sup> /hr (30 litres/sec): 11Pa 216m <sup>3</sup> /hr (60 litres/sec): 42.5Pa