

## TECHNICAL DATASHEET

# SV1 / SV2 Solar Slate Vent

## SOLAR SLATE VENTS

### Product Details

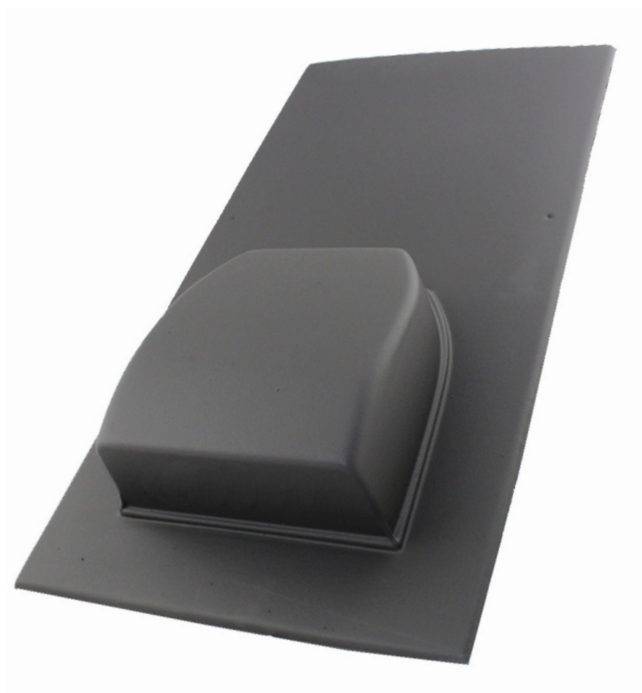
For use with Solar PV and Solar Thermal systems. Designed for easy access into the roof space for both electrical cables and water pipes.

Designed to be unobtrusive and for use with the majority of manufactures profiles and colours.

Moulded in 'HIPS' with UV stable paint to suite most colours.

### Product Features

- Moulded in 'High Impact polystyrene' with applied finish to match most tile manufacturer's profiles and colours.
- Unobtrusive design.
- Regulations – comply fully with the requirements of NHBC, BS5250:2002 and Building



SV1



SV2