

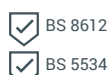
TECHNICAL DATASHEET
C08/S/L
TILE DRY VERGE



The Tile Dry Verge System permanently secures tiles on gable ends and gives an attractive maintenance free finish to the roofline.

The design helps protect the edge of the roof from the elements and eliminates the possibility of lifting and damage to the roof underlay. No mortar or timber guides are required. It can be bespoke manufactured to virtually any profile to suit individual requirements.

Our bespoke dry verge is manufactured from 0.7mm high grade Aluminium.



bre





TECHNICAL DATASHEET

C08/S/L TILE DRY VERGE

Product Details

The Tile Dry Verge System permanently secures tiles on gable ends and gives an attractive maintenance free finish to the roofline. It provides a neat, continuous and totally weatherproof finish to the gable.

Integral patented drip system channels water to the eaves. The components are manufactured from high grade powder coated Aluminium.

Product Features

- Provides full wind uplift and rain protection.
- Extremely easy and quick to install.
- Requires no maintenance once installed.
- Can be fully customised.
- Extensive range of colours available.

Compatibility

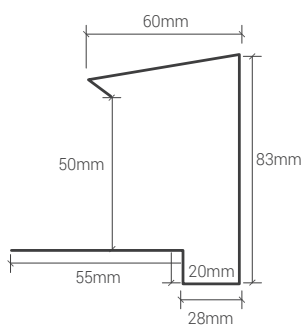
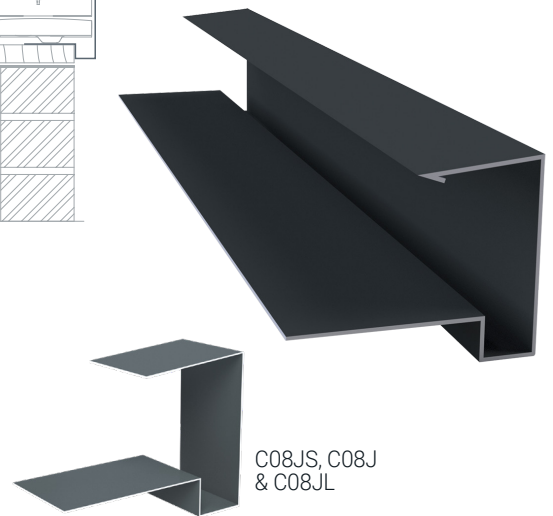
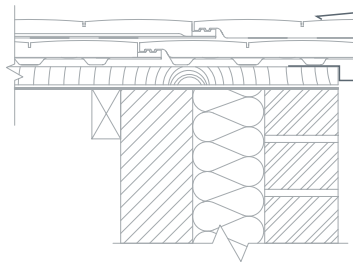
Fully compatible with most tiles on the market.
Suitable for brick, render & bargeboard construction.
For correct sizing for your tile requirements please contact our Technical Department.

Dimensions

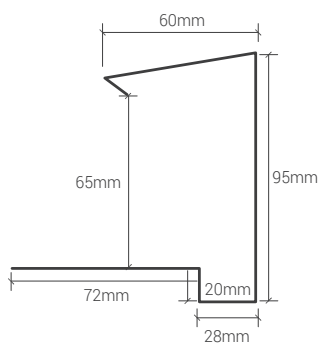
C08/C08S/C08L - Aluminium

Overall length: 3000mm

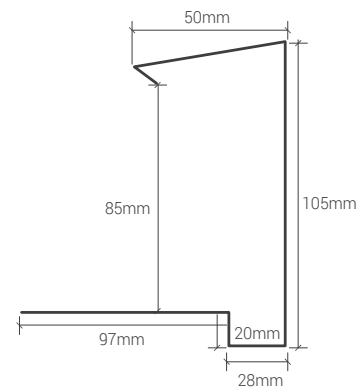
Code	Size	Colour	Pk Qty
C08S	50mm x 3m	Blk • Blue/Blk • Brwn • Wht	4
C08	65mm x 3m	Blk • Blue/Blk • Brwn • Wht	4
C08L	85mm x 3m	Blk • Blue/Blk • Brwn • Wht	4
C08JS	50mm (Jointer)	Blk • Blue/Blk • Brwn • Wht	1
C08J	65mm (Jointer)	Blk • Blue/Blk • Brwn • Wht	1
C08JL	85mm (Jointer)	Blk • Blue/Blk • Brwn • Wht	1



50mm version



65mm version



85mm version



T: +353 (0) 74 91 39500 info@northwestaluminium.com
www.northwestaluminium.com

