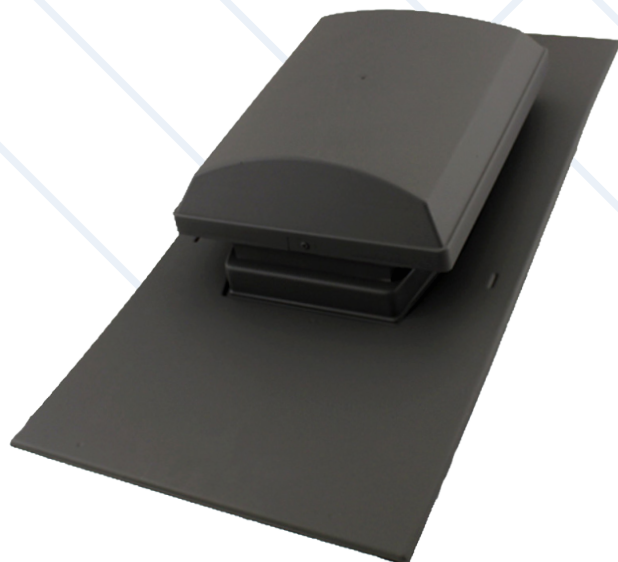


## TECHNICAL DATASHEET

# G5 Slate Vent

## GLIDEVALE COWL SLATE VENT



## Product Details

The low-profile cowl is geometrically the smallest available in the marketplace for the air capacity, projecting only 85mm above the roof surface.

Not recommended for high-level use as its large air capacity and wide spacing would tend to leave stagnant air pockets between units.

The G-Range are suitable for roof pitches between 20° and 60°.

## Product Features

- Colour-matched to blend in with adjacent tiles as standard, making the ventilators almost indiscernible once installed.
- Driving rain and deluge rain resistance demonstrated by test data.
- AA fire rating to BS 476: Part 3: 2004.
- Underlay opening protector, integral 4mm insect screen, and ventilator throat or extension sleeve meet design requirements of BS 5250.
- Designed and developed under BS EN ISO 9001.

## Technical

Performance:	Guaranteed actual nett free ventilation area: 20,000mm <sup>2</sup>
Spacing:	2.0m for 10,000mm <sup>2</sup> /m
	0.8m for 25,000mm <sup>2</sup> /m
Terminal Performance	
Airflow resistance when used as SVP/extract terminal:	54m <sup>3</sup> /hr (15 litres/sec): 0.8Pa
	108m <sup>3</sup> /hr (30 litres/sec): 2.6Pa
	216m <sup>3</sup> /hr (60 litres/sec): 11.5Pa