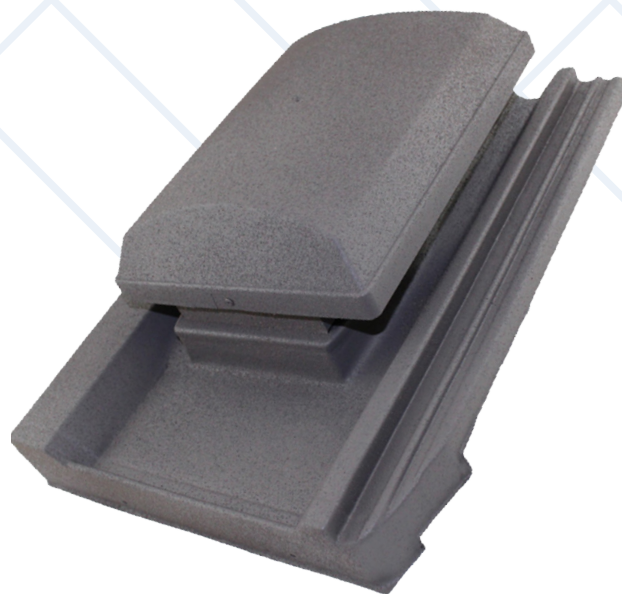


TECHNICAL DATASHEET

G5 Tile Vent

GLIDEVALE COWL TILE VENT



Product Details

The low-profile cowl is geometrically the smallest available in the marketplace for the air capacity, projecting only 85mm above the roof surface.

Not recommended for high-level use as its large air capacity and wide spacing would tend to leave stagnant air pockets between units.

Product Features

- Universal design suits virtually all single lap interlocking roof tiles.
- Fade-retardant UV-stable surface treatment proven in use over 25 years.
- Easy to install (instructions with pack).
- Compressible foam filler ensures driving and deluge rain resistance as shown by test.
- Underlay Protector maintains function of underlay when cut.
- Optional snap-fit Universal Extension Sleeve available to maintain air path into roof void.
- Low airflow resistance - can be used as a terminal for soil vent pipe (SVP) or most extract fans, with 100mm diameter Soil Universal Pipe Adaptor.
- Integral 4mm insect screen.
- Designed and developed under BS EN ISO 9001.

Technical

Performance:	Guaranteed actual nett free ventilation area: 20,000mm ²
Spacing to achieve:	10,000mm ² /m; 2.0m 25,000mm ² /m; 0.8m
Airflow resistance:	2.5Pa at 54m ³ /h (15 litres/sec)
	11Pa at 108m ³ /h (30 litres/sec)
	42.5Pa at 216m ³ /h (60 litres/sec)