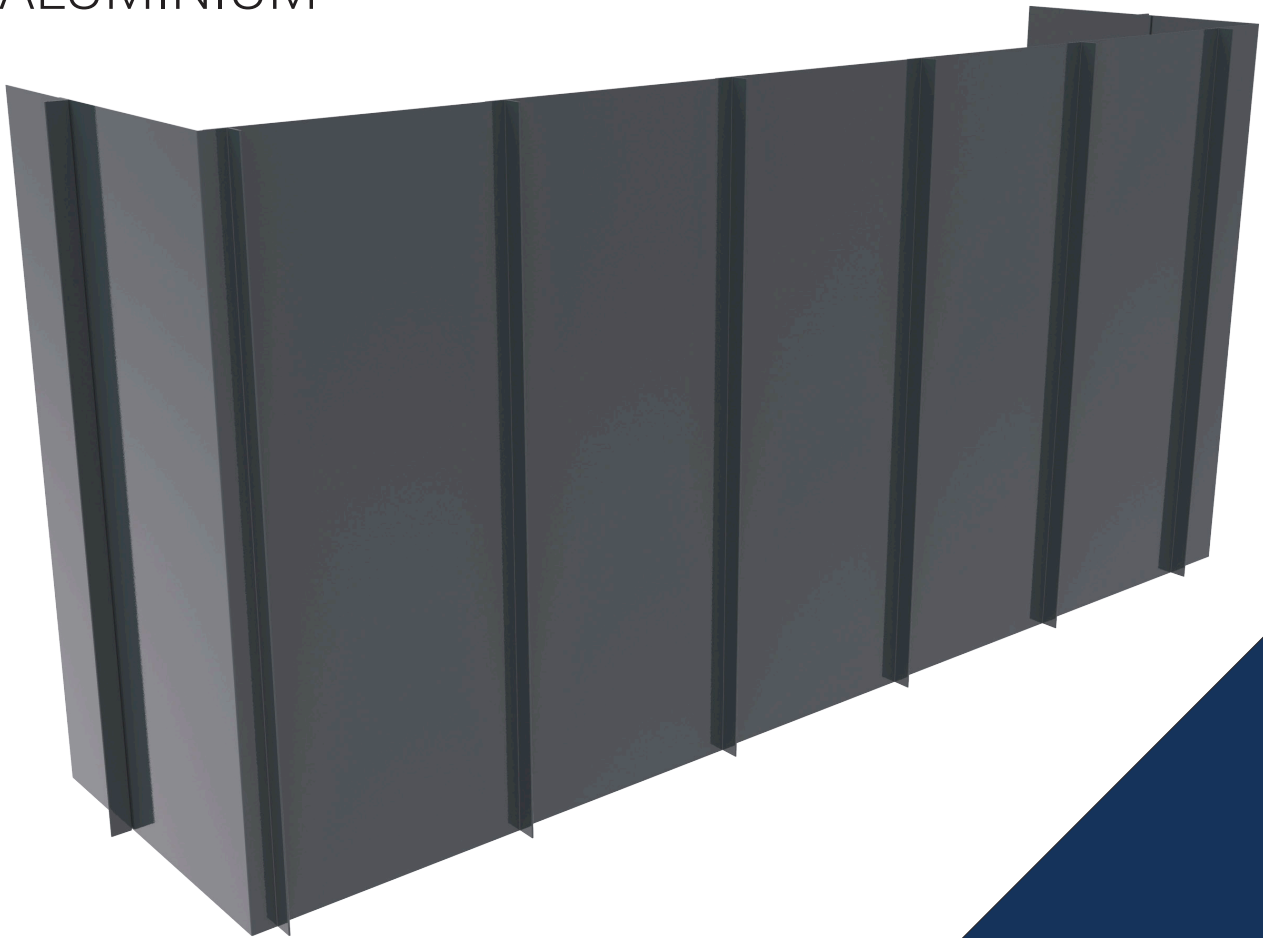




INSTALLATION GUIDE

GutterClad Standing Seam

ALUMINIUM





INSTALLATION GUIDE

GutterClad Standing Seam ALUMINIUM

1. Introduction

1.1 TECHNICAL DATA

Dimensions:	375mm sections x Varying heights
Material:	Polyester Coated Aluminium (0.9/1.0mm)
Colour:	Varies

1.2 DESCRIPTION

The NWA Standing Seam System is generally used to finish off flat roofs, porches or other details requiring an eye-catching soffit detail. The components are manufactured from high grade pre-coated Polyester Powder Coated Aluminium.

1.3 STORAGE

The NWA Standing Seam should be stored on a raised platform, not resting on the ground, on a flat, clean and level surface. Crushing or distortion should be avoided by the manner in which the Standing Seam are stacked. The profiles should be covered by a tarpaulin or waterproof sheet.

2. Installation

2.1 GUIDANCE NOTES

Every site and project will be different but in general there are a number of important principles for the roofer.

- The NWA Standing Seam must be fixed to a timber/plywood soffit with a waterproof membrane laid prior to the fixing of the standing seam.

The general principles remain the same however and typical construction details are found in Section 2.2.

It is important when fixing NWA Standing Seam that the timbers being fixed to are sound and not effected by damp. If you have any doubt regarding the details below please feel free to contact our head office on 074 91 39500 or info@nwa.ie.



T: +353 (0) 74 91 39500 info@northwestaluminium.com
www.northwestaluminium.com

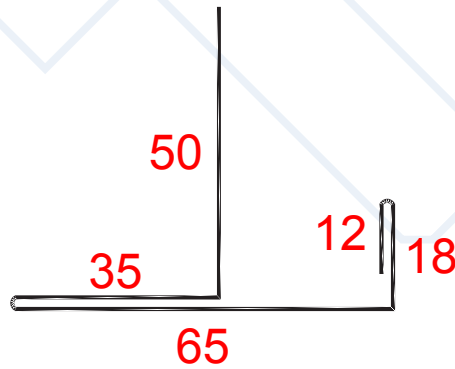




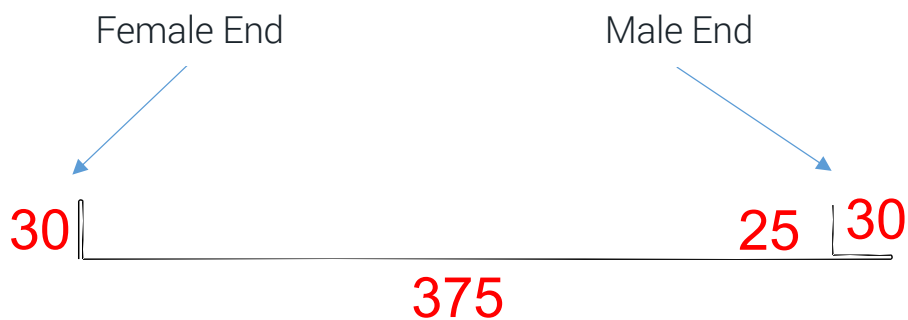
INSTALLATION GUIDE

GutterClad Standing Seam ALUMINIUM

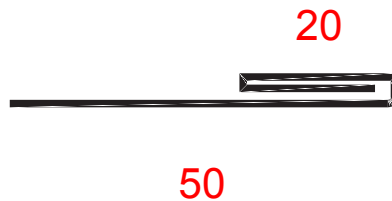
3. Components



Profile 1 - Base Piece



Profile 2 - Standing Seam



Profile 3 - Gripper

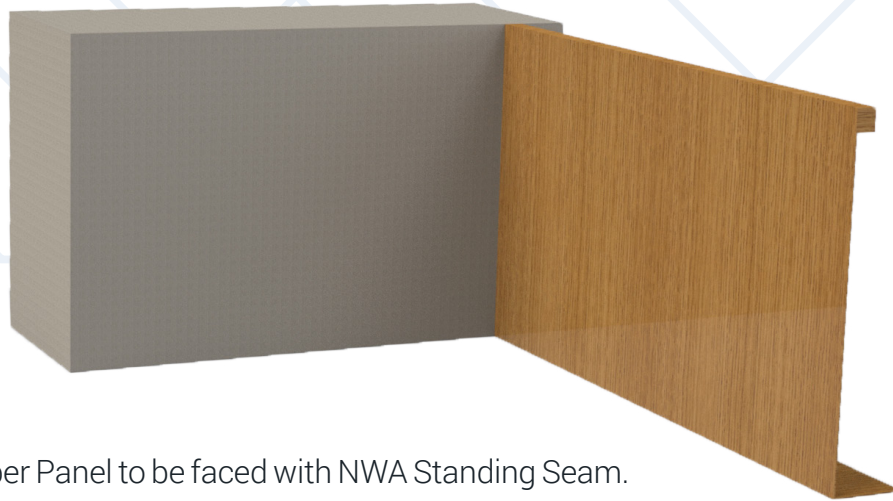




INSTALLATION GUIDE

GutterClad Standing Seam ALUMINIUM

2.2 NWA Standing Seam Installation



Timber Panel to be faced with NWA Standing Seam.

General Procedure:

1. Ensure the walls/timbers are suitable for fixing a profile to. Profile 1 should be fitted to the front of the wall to be faced. Fitted with 30mm Flat head screw or slabbing nail 300mm c/c. This profile is placed at the bottom of the wall to be faced. This profile acts as a "seat" for the Standing Seam.



Figure 1. 3d View

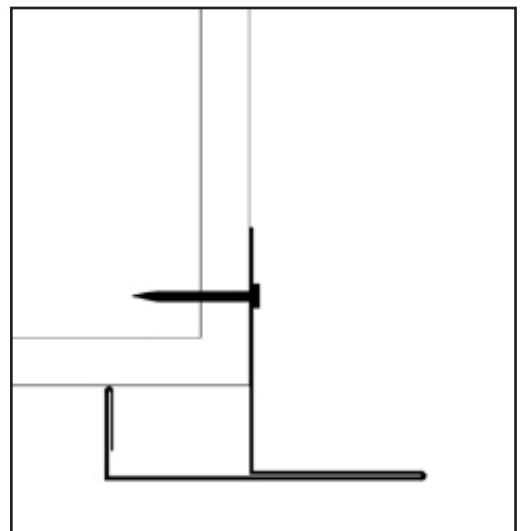


Figure 2. 2d Section view





INSTALLATION GUIDE

GutterClad Standing Seam ALUMINIUM

2. The gripper is then positioned as below. Fixings with a 30mm Flat head screw or slabbing nail at third points. The fixing must have a flat head to ensure a good detail.

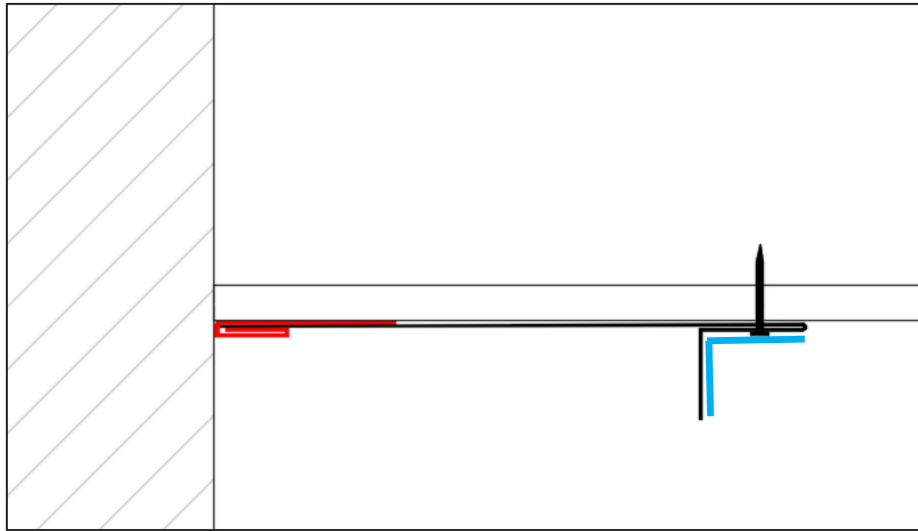


Figure 3. Plan View – Gripper in Red

3. On your first piece of Standing Seam please cut a straight portion a short distance from the female side, leaving a large portion of Standing Seam.
4. Sleeve this into the gripper piece on the Figure 3 and fix at third points along the piece. The area highlighted in blue in Figure 3 should have MS Polymer added over the height of the seam. This will ensure there is no slippage of the standing seam over time.



Figure 4. 3d View



T: +353 (0) 74 91 39500 info@northwestaluminium.com
www.northwestaluminium.com





INSTALLATION GUIDE

GutterClad Standing Seam ALUMINIUM

5. Consecutive lengths of the KYTUN Standing Seam should then be fixed as outlined above. The female end sliding over the male end and each piece fixed as per Figure 5.

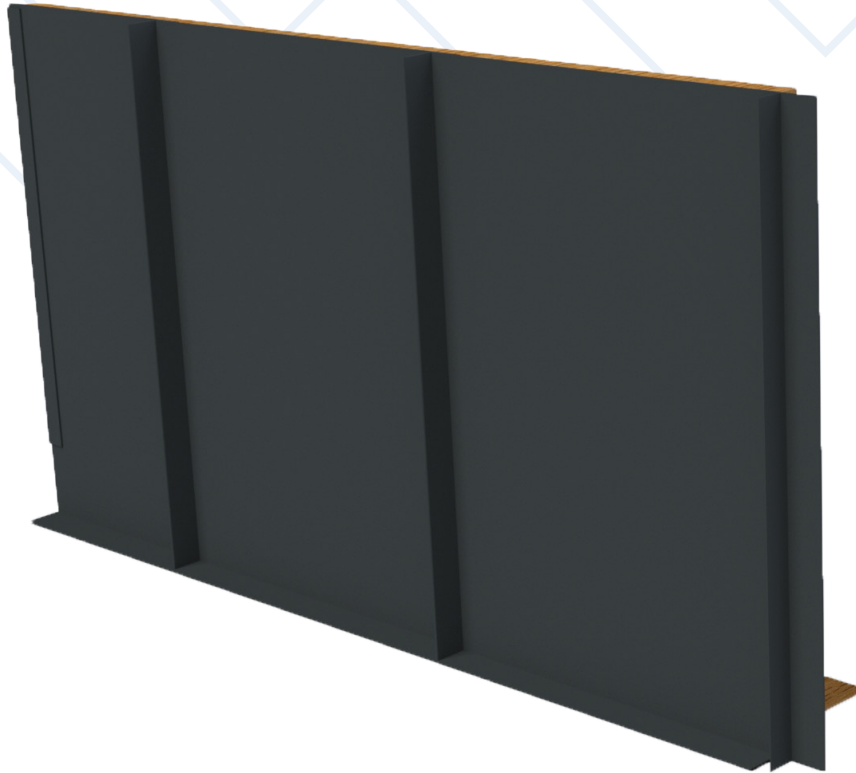


Figure 5. 3d View

6. Place the next female end over male and when you get to the corner press the Standing Seam portion around the corner. Ensure it is bent tight to the corner. Fix this portion into place.
7. Fix the gripper to the wall at the end point of the fascia.
8. Measure and cut the remaining portion of standing seam. Fit the female end over the male end and slide the flat portion into the gripper.



T: +353 (0) 74 91 39500 info@northwestaluminium.com
www.northwestaluminium.com

