



# GutterClad™ Secret-Fix Box Gutter

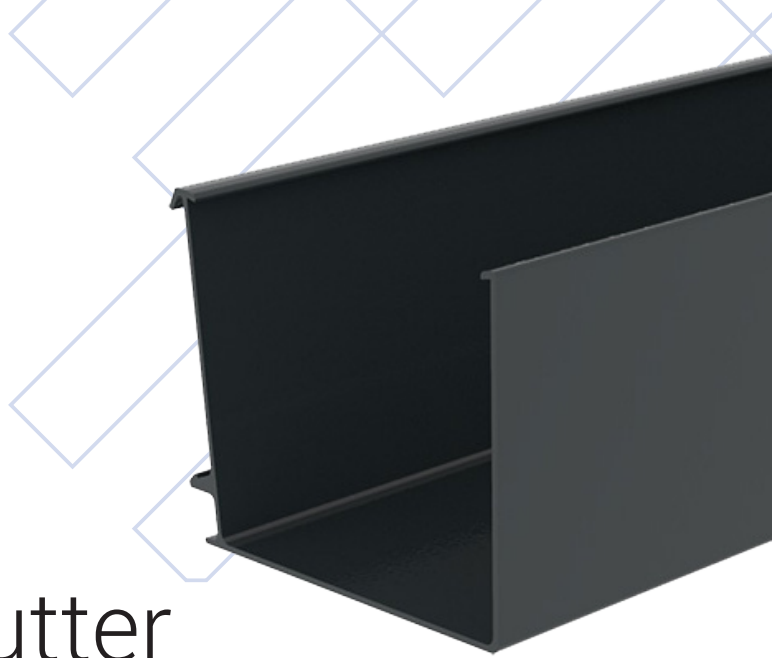
INSTALLATION GUIDE





INSTALLATION GUIDE

# GutterClad<sup>™</sup> Secret-Fix Box Gutter ALUMINIUM



## Introduction

GutterClad's Secret fix box gutter profile and accessories are designed and manufactured to provide the essential architectural features appropriate to architecturally designed buildings.

As we manufacture all the gutters & accessories in our state of the art on site facility, we can accommodate any special requirements you may have in relation to length, colour, special angles etc.

This product is made from Aluminium Alloy 6063 under BS EN 755. The various elements interlock, snap or slide together with a wall thickness of 2.75mm unpainted.

### Durability

Aluminium gutter systems have a low maintenance life in excess of 40 years in rural and suburban conditions and in excess of 25 years in industrial and marine conditions.

### Fire Rating

Non Combustible. Melting temperature for aluminium is approx. 660° C.



T: +353 (0) 74 91 39500 [info@northwestaluminium.com](mailto:info@northwestaluminium.com)  
[www.northwestaluminium.com](http://www.northwestaluminium.com)





INSTALLATION GUIDE

# Secret Fix Box Gutter

## ALUMINIUM

### Preparation

All fascia boards should be in good condition, level and straight.

The fascia should be capable of supporting the gutter when full of water, ice or snow. Where the gutter is fixed to PVC fascia board, it is recommended that the gutter is fixed through to the timber support framework.

Use standard metal work tools to cut or drill Aluminium gutters. Angle grinders are not recommended. Where gutter or fittings have been powder coated, cut edges should be deburred and touch up paint used.

### Gutter Position

Gutters must be installed level or to a fall of 1:600. The gutter should not be positioned at a level which causes rainfall to overshoot the gutter, i.e., too low, or where it is damaged by the high velocity impact of sliding snow, i.e., too high.

### Fixing

To ensure the long-term durability of aluminium gutter systems, it is vitally important to ensure that the fixing components are equally durable and capable of providing the necessary support. They must therefore be non-corrosive, of a compatible material to ensure no electrolytic corrosion occurs and of the appropriate size.

Only the recommended 5x50mm stainless-steel screws must be used to fix gutters. If fixing to fascia boards made of materials other than wood or aluminium composites, please call our Technical Department.

### Jointing

Joint sealing must not be carried out in wet weather or in temperatures below 5°C or above 40°C. Both surfaces to be jointed should be liberally sprayed with the surface preparation cleaner and wiped dry with a clean, dry cloth to ensure that any dirt, grease or other contaminant is removed prior to applying the high performance, low modulus sealant.

Ensure that the gutter joint sockets/spigots are correctly aligned with each other to ensure free thermal movement within the gutter joint.

Only suitable high-performance low modulus sealant can be used. Use of other sealants may result in early joint failure. New sealant should be used at all times.



T: +353 (0) 74 91 39500 [info@northwestaluminium.com](mailto:info@northwestaluminium.com)  
[www.northwestaluminium.com](http://www.northwestaluminium.com)





INSTALLATION GUIDE

# Secret Fix Box Gutter

ALUMINIUM

## Fitting Instructions

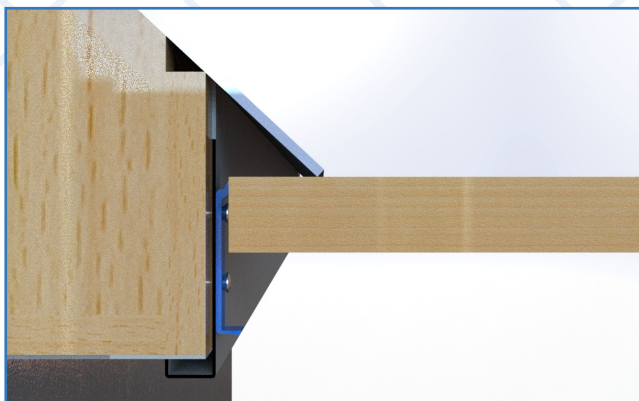


Fig 1. Setting level of the gutter.

Ensure the roof covering has the correct overhang at eaves. Starting at an end or corner away from an outlet, place a spirit level under the lowest edge of the tile or slate and mark the level on the fascia (see fig 1). Use this mark to position and fix the first gutter fixing bracket and set a string line with a fall of 1:600 towards the outlet. Alternatively set the line nominally level. It is important to note that the gutter must be hooked into position.



Fig 2. Bracket in place at 500mm centre-to-centre.

Check the fascia board alignment and shim the brackets where necessary. Fix bracket using 5 x 50mm stainless steel screws through the top hole also.

Fix Fascia brackets at 500mm c/c using 5 x 50mm stainless steel screws (see fig 2). Fix the screw into the lower slot and set to the string line as required. At corners and outlets fix one additional fascia bracket centrally on those pieces.



Fig 3. Gutter hooked on top of fascia bracket prior to being snapped in place.

Hook the rear of the gutter over the fascia bracket and then swing the gutter down over the base of the bracket and snap in place. *NOTE: Significant force is required to ensure snap fit.*



T: +353 (0) 74 91 39500 [info@northwestaluminium.com](mailto:info@northwestaluminium.com)  
[www.northwestaluminium.com](http://www.northwestaluminium.com)







INSTALLATION GUIDE

# Secret Fix Box Gutter

## ALUMINIUM



Fig 4. Fitted length with the high performance, low modulus sealant. bead in place.



Jointer with plastic spacers.

## Jointing

Both surfaces to be jointed should be liberally sprayed with the surface preparation cleaner and wiped dry with a clean, dry cloth to ensure that any dirt, grease or other contaminant is removed prior to applying the high performance, low modulus sealant. Apply 1 no. 10mm bead of high performance, low modulus sealant to each gutter profile.

Place one gutter up against the other. Then move the gutter to ensure 5mm gap between

the lengths. This is very important.

Prior to using the SnapFit internal Jointer ensure that the rubber spacer is in place on both sides as shown below. Snap the jointer into place. *NOTE: Significant force is required to ensure snap fit.* Cone around the jointer again to ensure no water can escape. The same system is used to install outlets, corners and endcaps.



Fig 4. 3m Length of gutter installed



Fig 5. Outlet and End cap in place.

On completion of an installation, blank off all gutter outlets. Fill gutter to overflow level and leave for 5 minutes, then check for leakage. Discharging the flood test water into rainwater pipes will identify any leaks in rainwater pipe joints. Any joints that fail should be taken apart and all sealant cleaned off. Prior to resealing the joint, the surfaces should liberally sprayed with the surface preparation cleaner and wiped dry with a clean dry cloth. Joint sealant should then be applied, re-sealed and re-tested.



T: +353 (0) 74 91 39500 [info@northwestaluminium.com](mailto:info@northwestaluminium.com)  
[www.northwestaluminium.com](http://www.northwestaluminium.com)

