

INSTALLATION GUIDE

Slate Dry Verge T1

ALUMINIUM DRY VERGE





INSTALLATION GUIDE

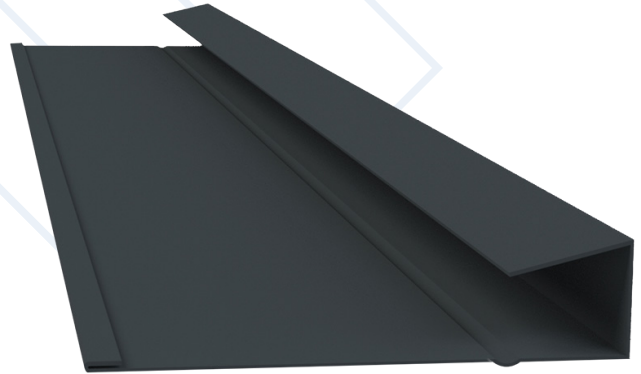
Slate Dry Verge T1

ALUMINIUM DRY VERGE

Product Details

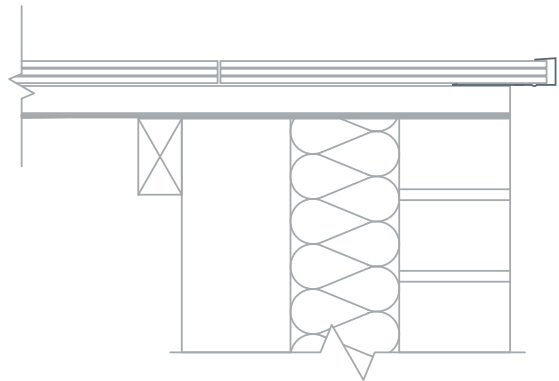
The Kytun Slate Dry Verge System permanently secures slate applications on gable ends protecting the verge from wind uplift and rain. The Slate Dry verge System can be used with both interlocking slates and double lap natural or fibre cement slates.

The components are manufactured from high grade pre-primed polyester coated aluminium, polyester coated galvanised steel & plastisol coated galvanised steel which produces textured finish.



Product Features

- Provides full wind uplift and rain protection.
- Patented 'Drip System' which allows for self drainage of rain water into the gutter.
- Extremely easy and quick to install.
- Requires no maintenance once installed.
- Can be fully customised.
- Extensive range of colours available.



Dimensions

C01 / C01N Aluminium

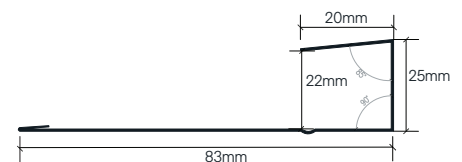
Overall length: 2400mm/3000mm

Code	Size	Colour	Pk Qty
C01	18mm x 2.4m/3m	Blk • Blue/Blk • Brwn	8
C01N	25mm x 2.4m/3m	Blk • Blue/Blk • Brwn	8

Aluminium
Polyester Coated



4-5mm
Fibre Cement Slate



6-8mm
Natural Slate

C01 Slate Dry Verge also available in Galvanised Steel



T: +353 (0) 74 91 39500 info@nwa.ie

www.northwestaluminium.com





INSTALLATION GUIDE

Slate Dry Verge T1

ALUMINIUM DRY VERGE

1. The underlay and battens are to be laid and cut flush with outer edge of gable wall or bargeboard. (Fig.1a). The gutter position should be set up to allow the verge trim channel run into it. (Fig.1b)
2. Position the verge trim on top of the battens and align against the batten ends with the drip outside the batten end. Allow for construction detail. Ensure the C01 is fixed at every batten with 40mm long galvanised clout nail (Fig.2).
3. Using an internal sleeve: Slide the sleeve halfway into the verge already fixed onto the roof (Fig.3a). Slide the next piece of trim over the jointer and butt against other trim. Fix verge as above (Fig.3b). Seal the joint using a low modulus mastic sealant by running it around the joint.



Fig 1a.

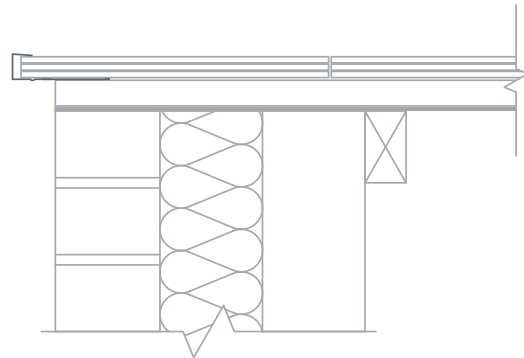


Fig 1b.



Fig 2.



Fig 3a.



Fig 3b.





INSTALLATION GUIDE

Slate Dry Verge T1

ALUMINIUM DRY VERGE

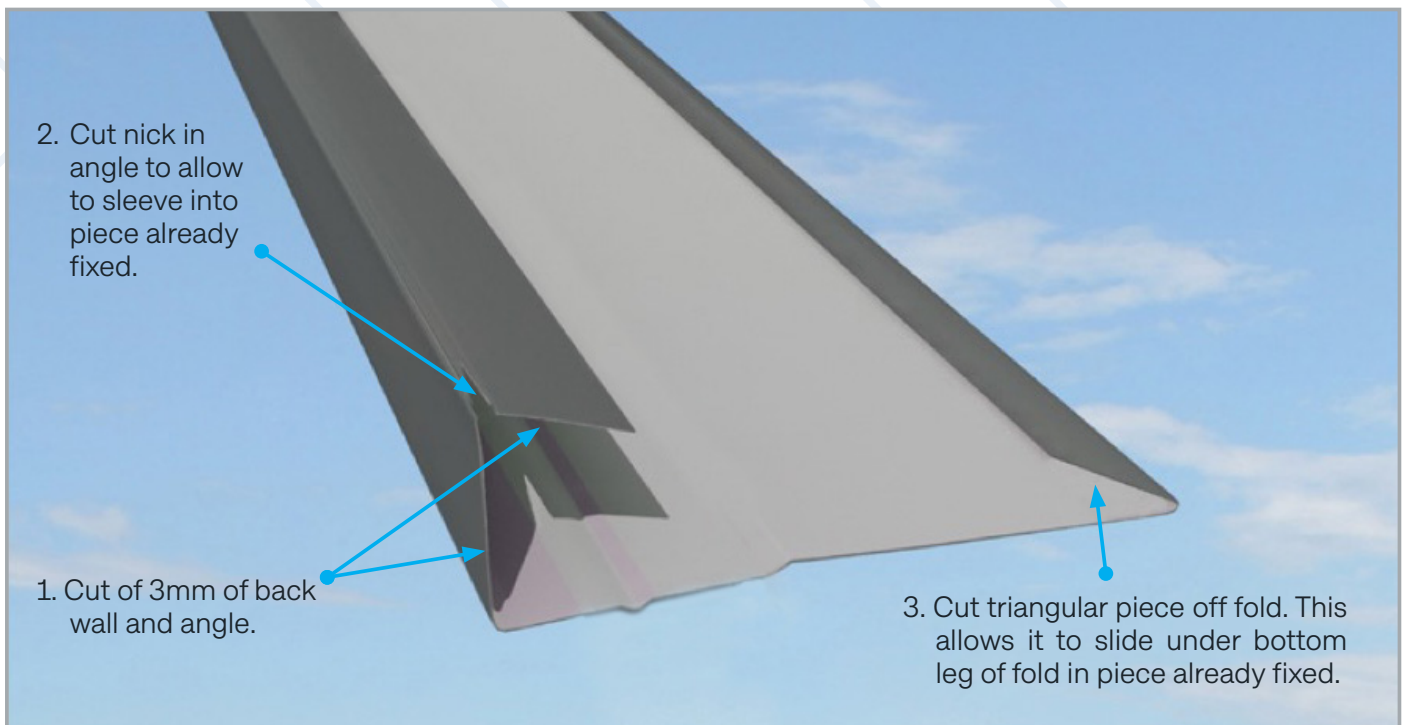


Fig. 4 - Left hand cuts on C01 Trim to sleeve into another piece.

4. Alternatively after installation of the lowest piece on the roof cuts can be made to the next portion of trim as per Fig. 4.

This will allow the product to be sleeved into the portion of trim already on the roof. This should be slid in from 25-50mm.

5. At the Ridge apex after measuring saw cut the upper Kytun Slate Dry Verge to meet each other. When in place affix the Kytun Apex Piece to finish the verge. (Fig.4)



Fig 5.



T: +353 (0) 74 91 39500 info@nwa.ie

www.northwestaluminium.com

